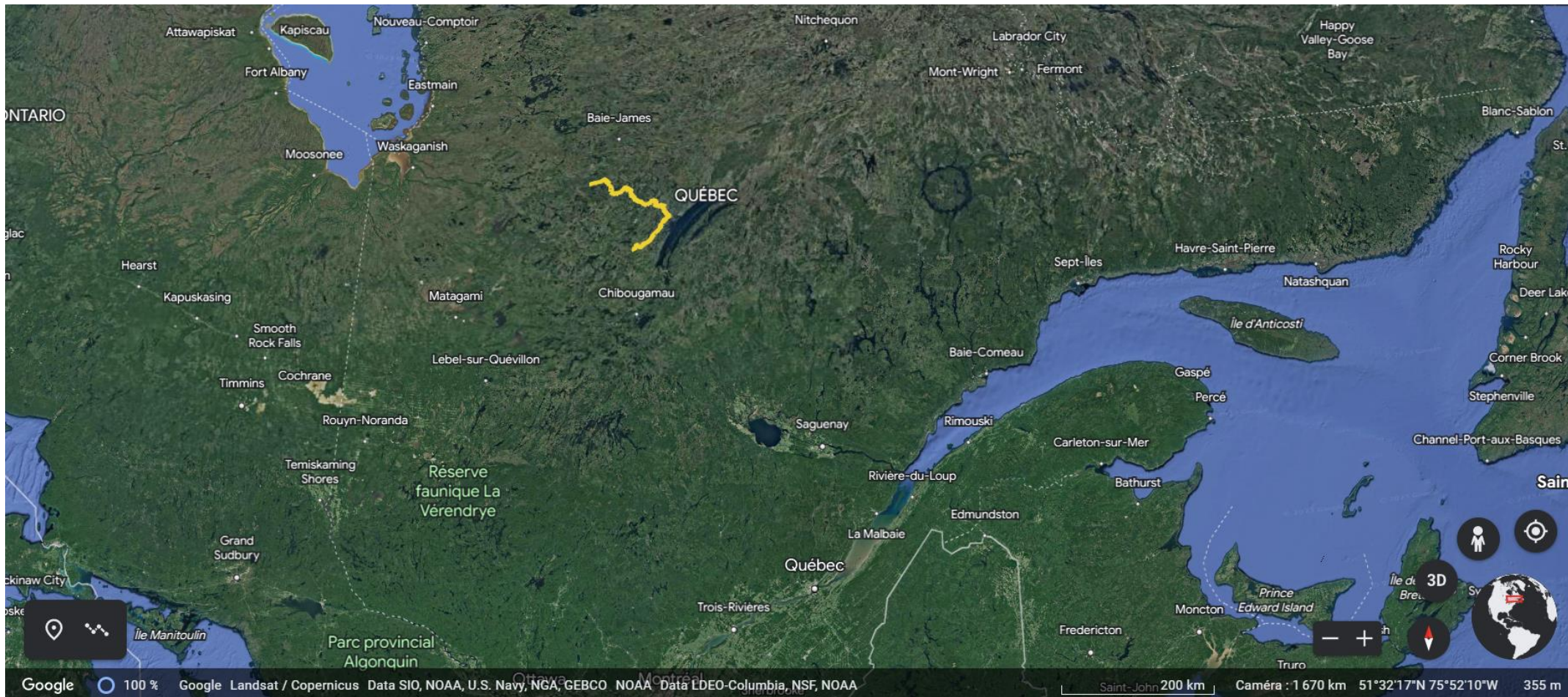
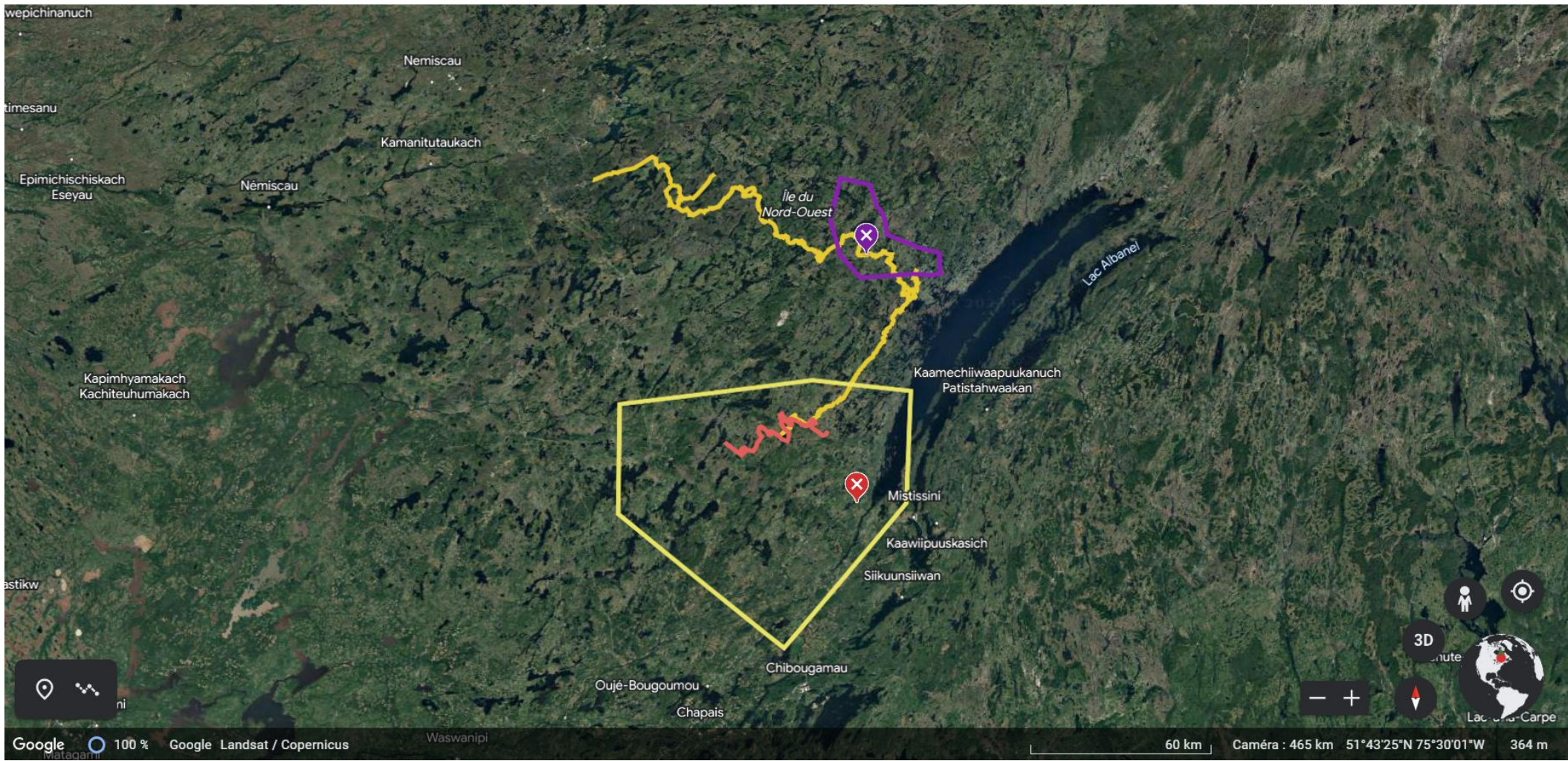
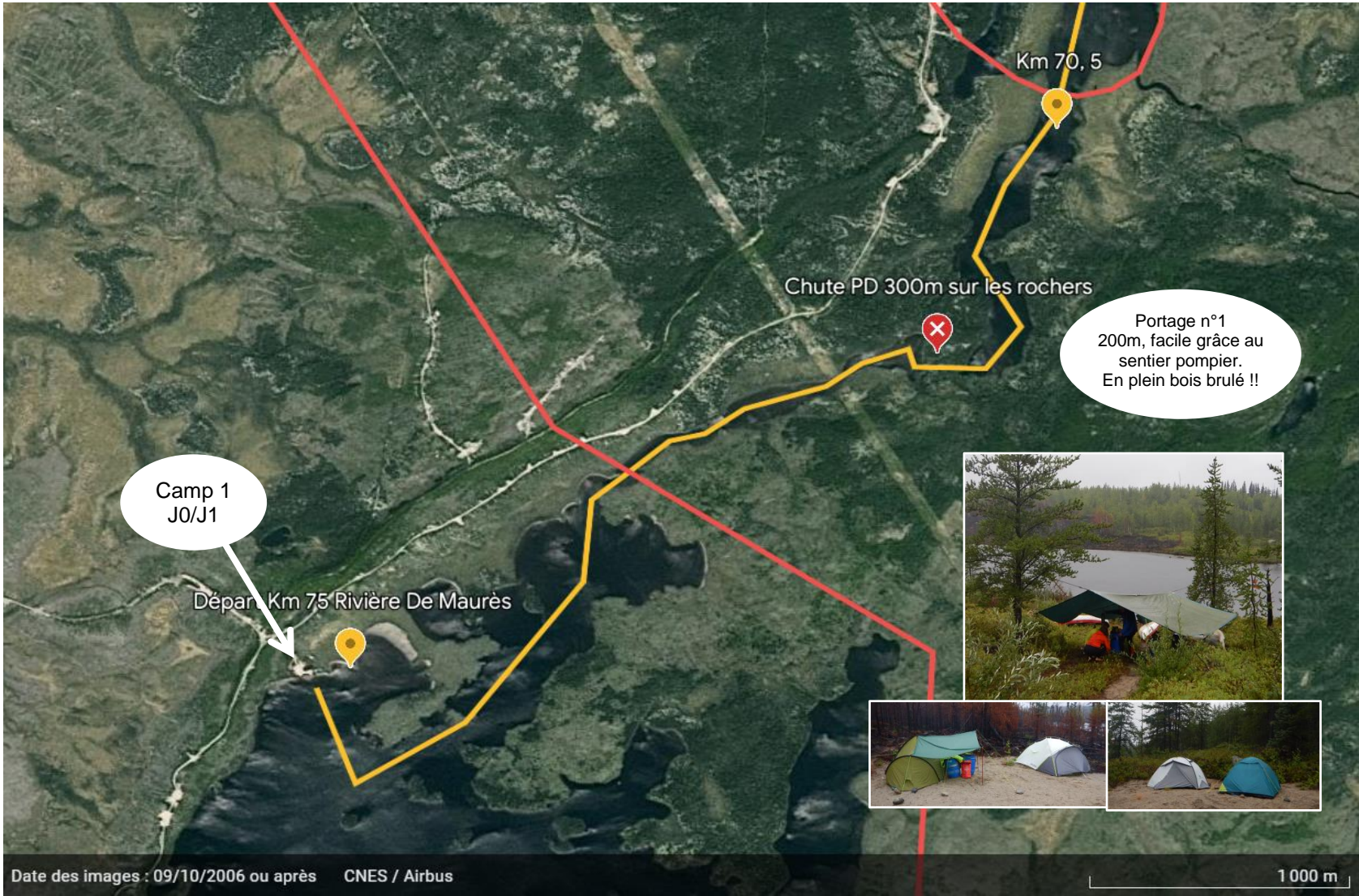
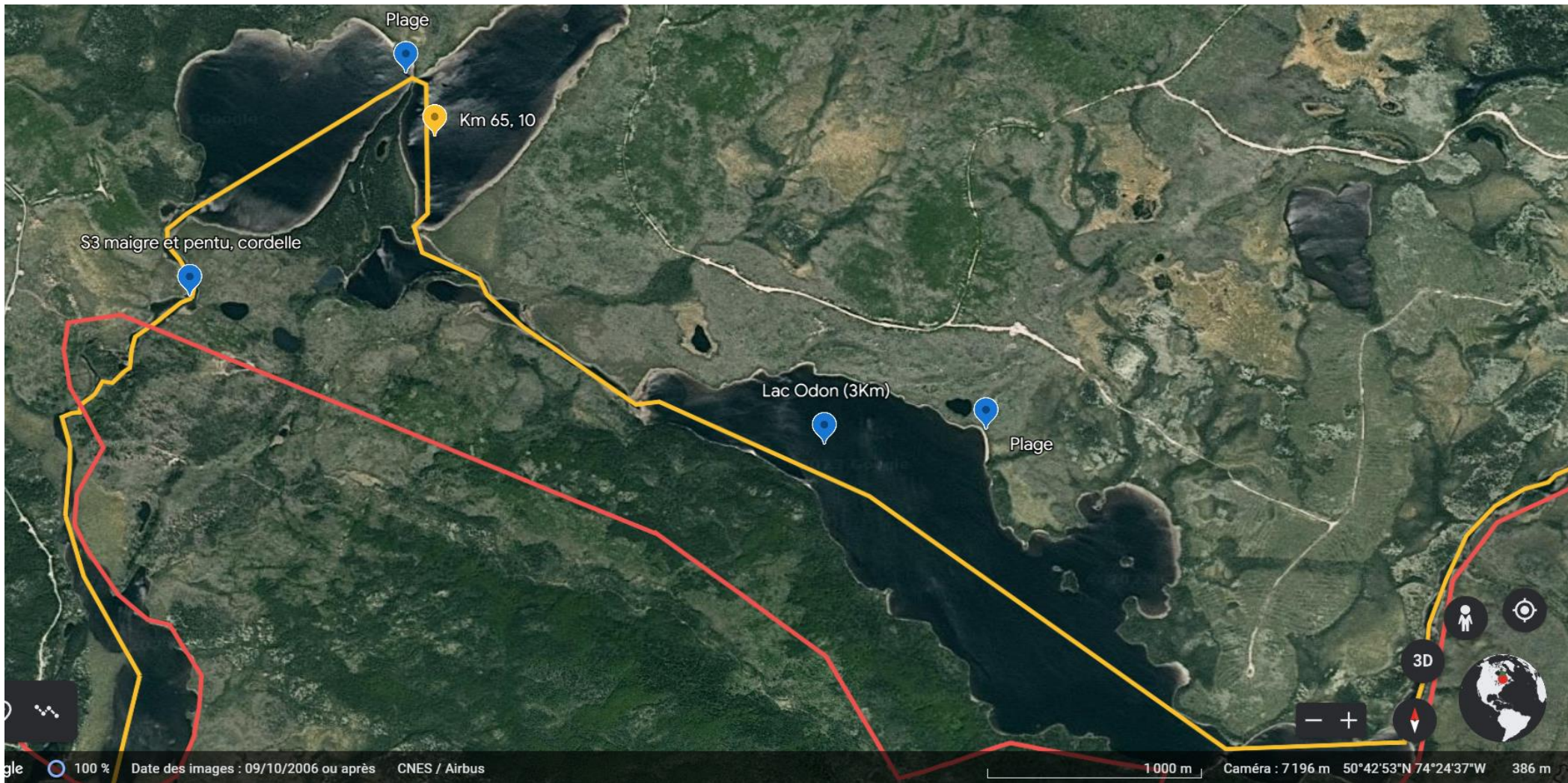


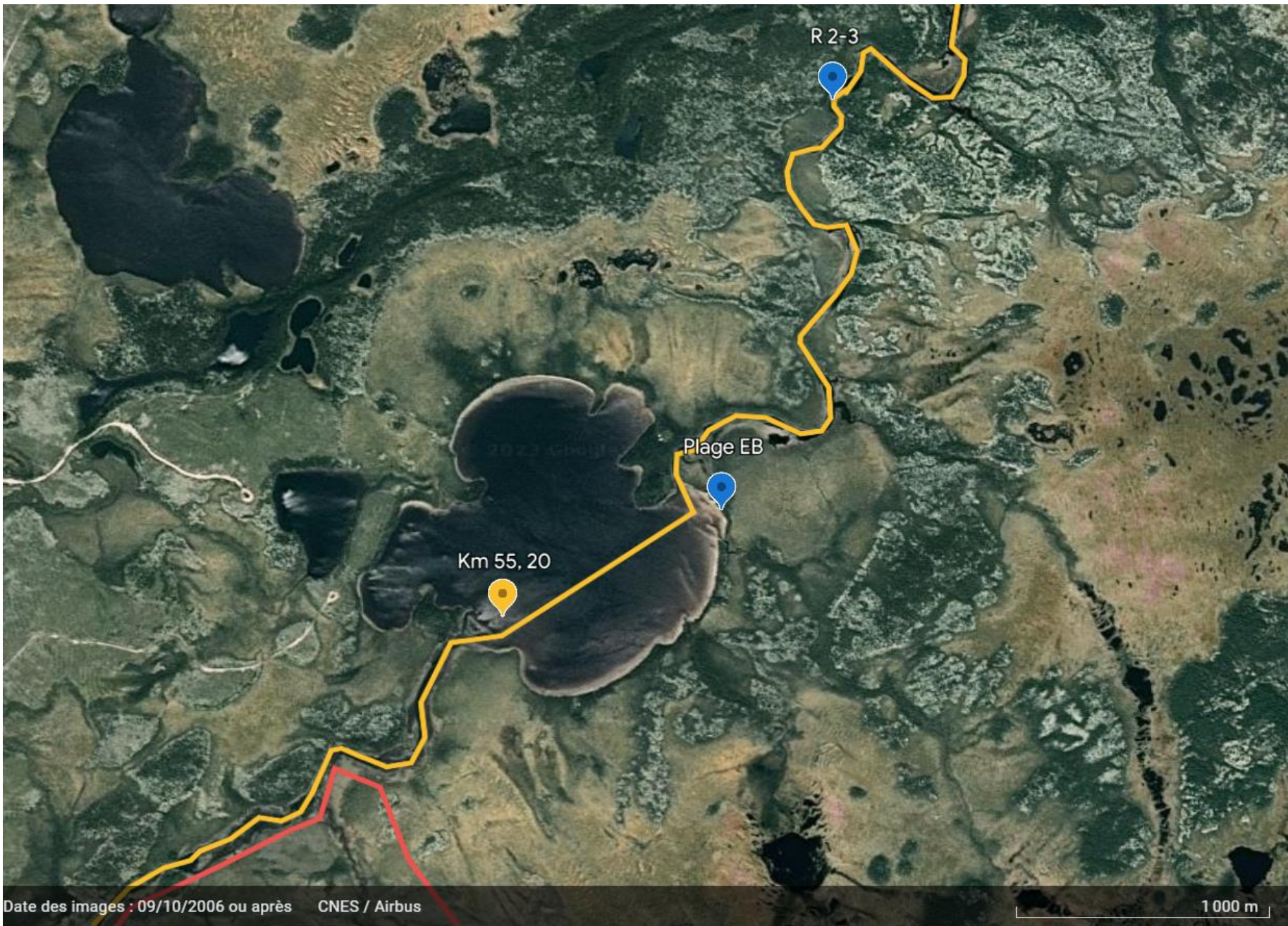
Québec 2023. De Maurès, Natastan, Rupert sud, Lac Megouez





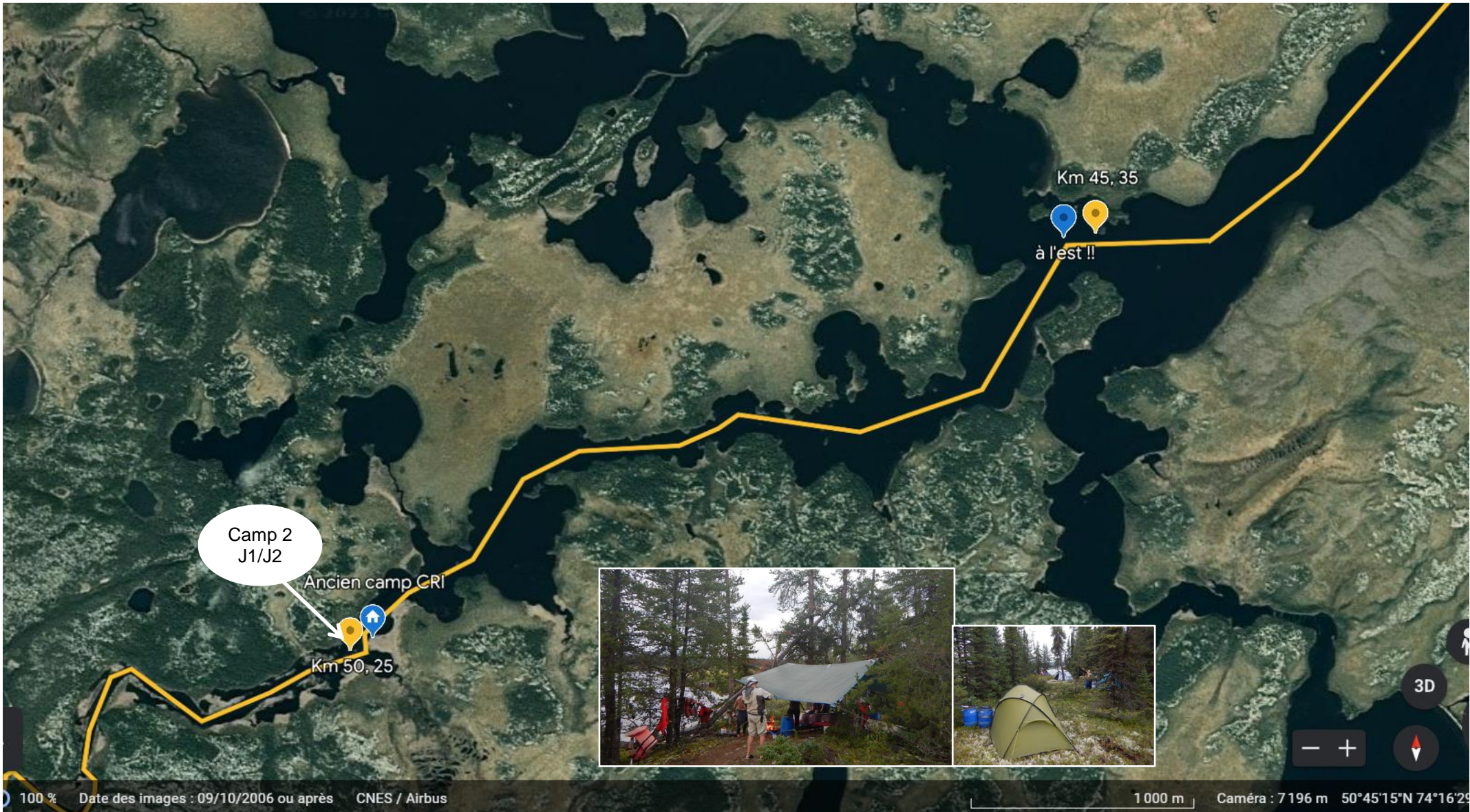


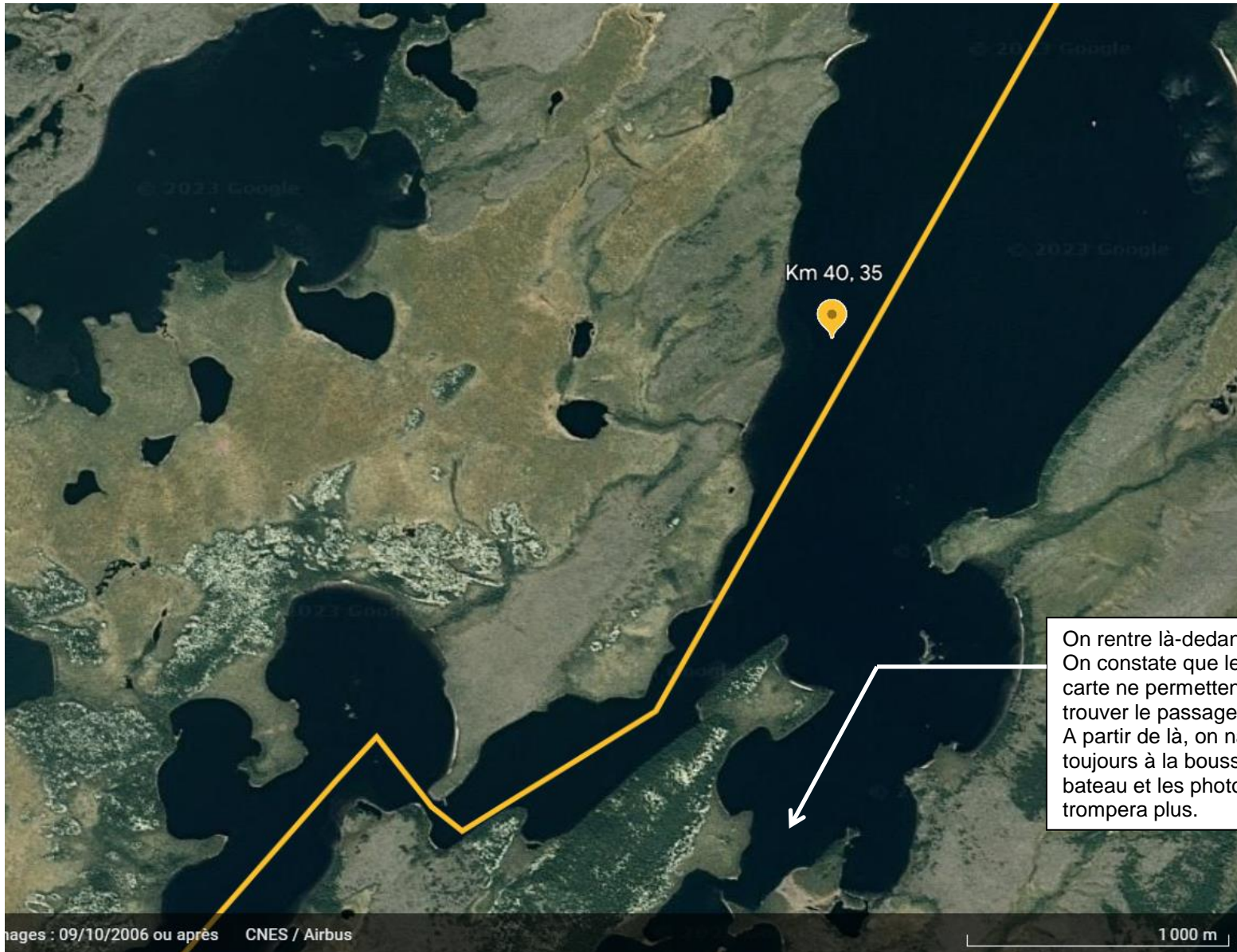




Date des images : 09/10/2006 ou après CNES / Airbus

1 000 m





Etape
ZipLock

On rentre là-dedans ...
On constate que le visuel et la
carte ne permettent pas de
trouver le passage.
A partir de là, on navigue
toujours à la boussole sur le
bateau et les photos et on ne se
trompera plus.



Ces petits points blancs sont des maisons Cri. On les voit nettement de l'eau.

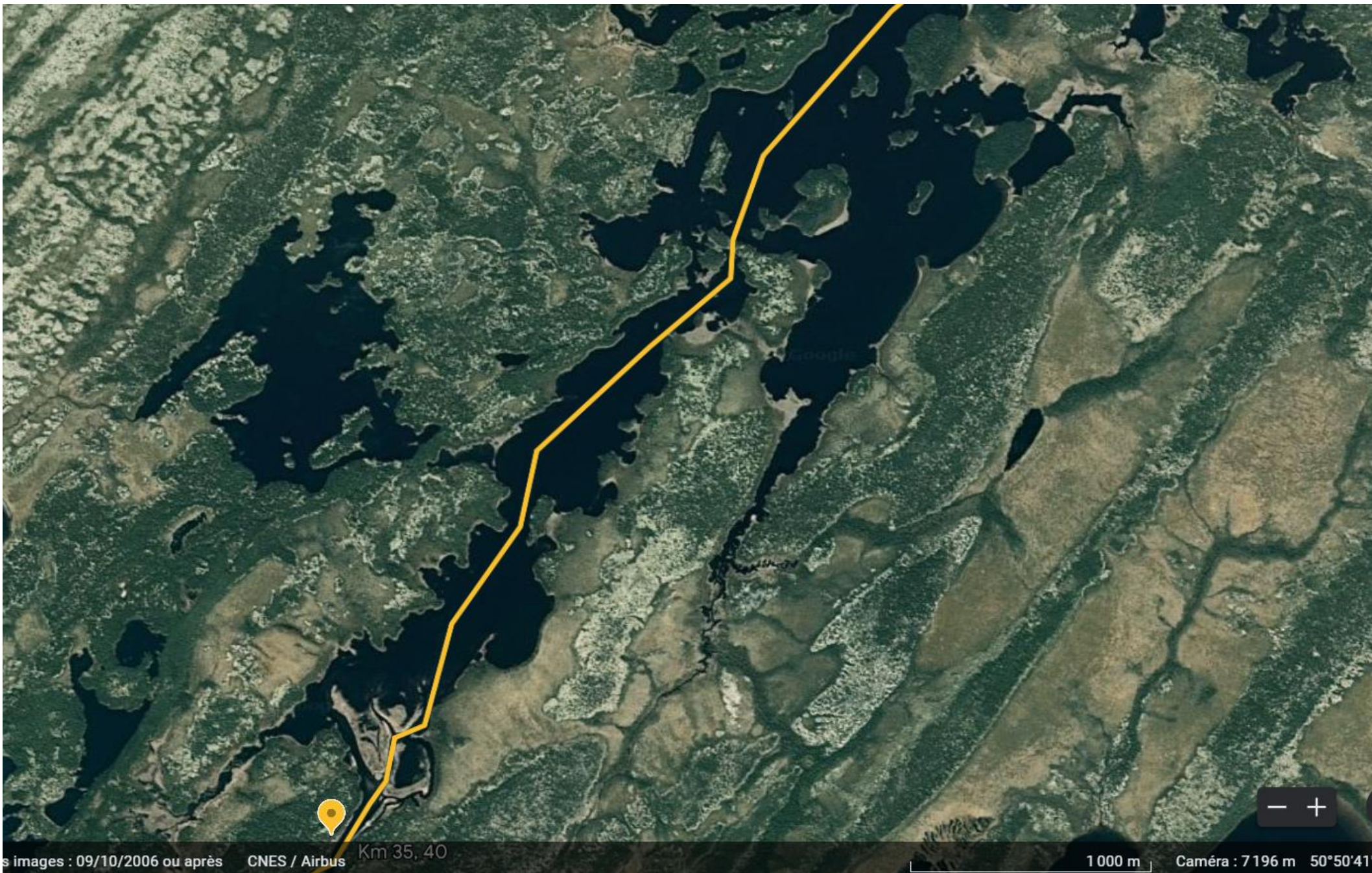
Plage. Camp cri

Km 35, 40

EV R1

EV - R1

plus profonde à droite de l'île



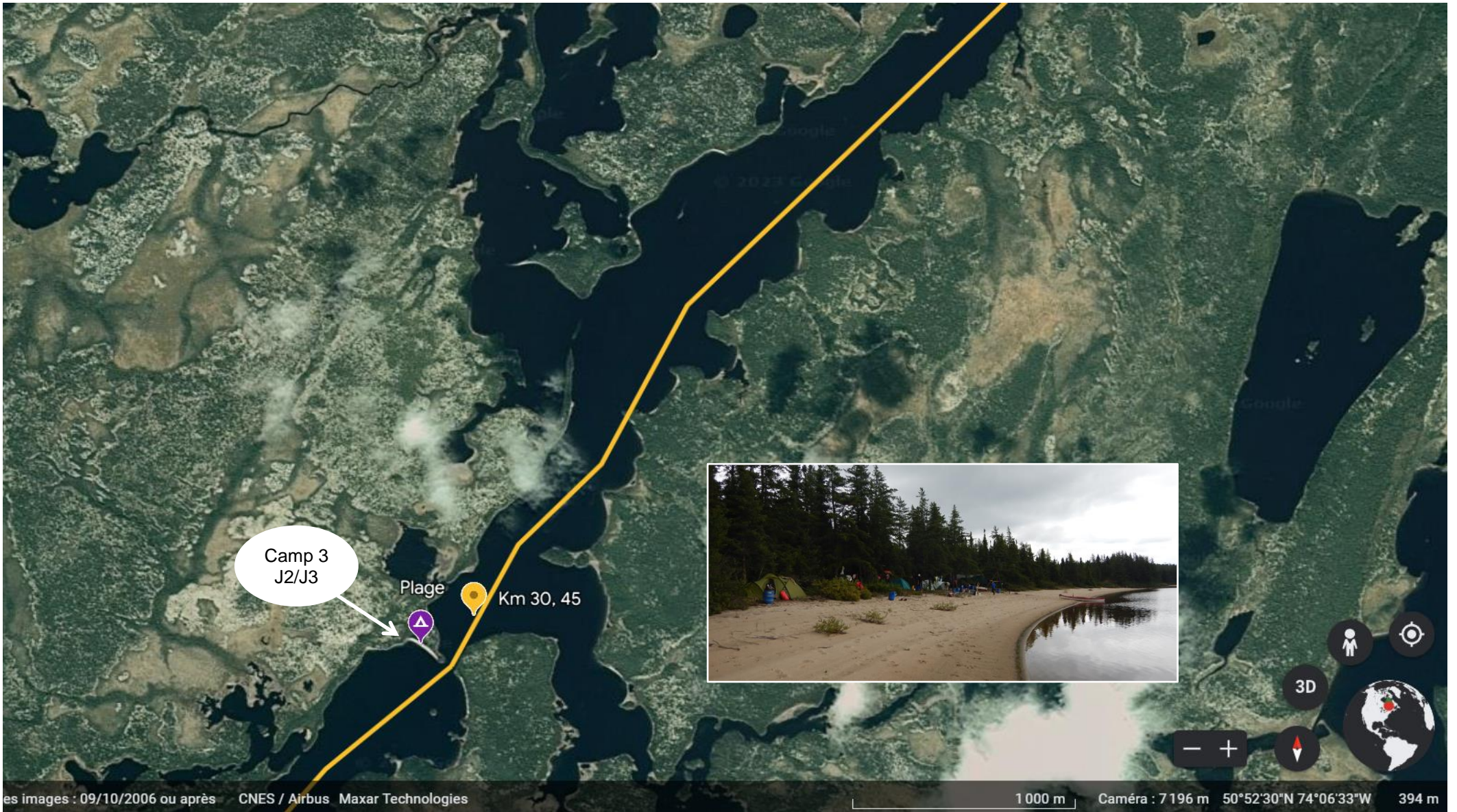
s images : 09/10/2006 ou après

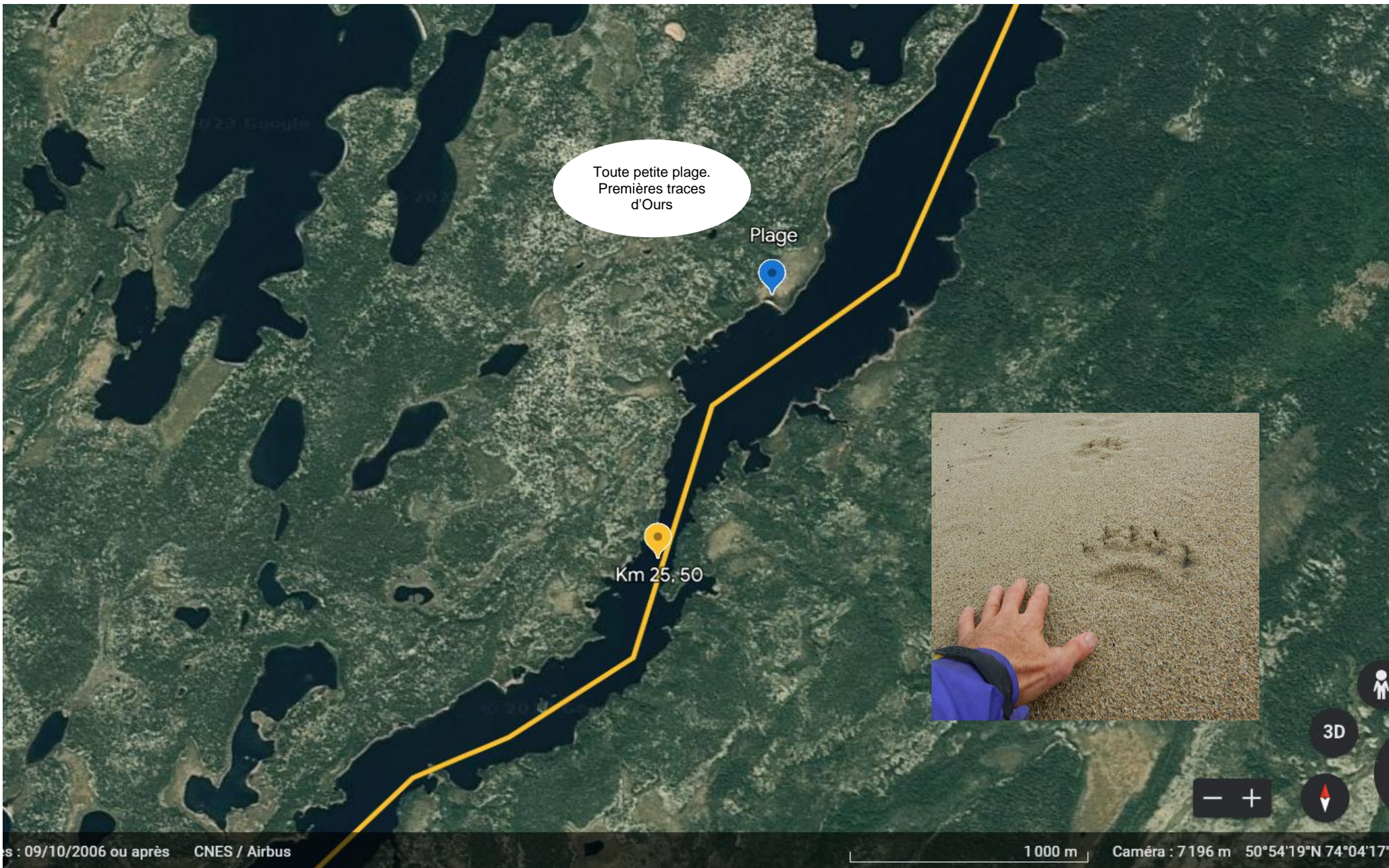
CNES / Airbus

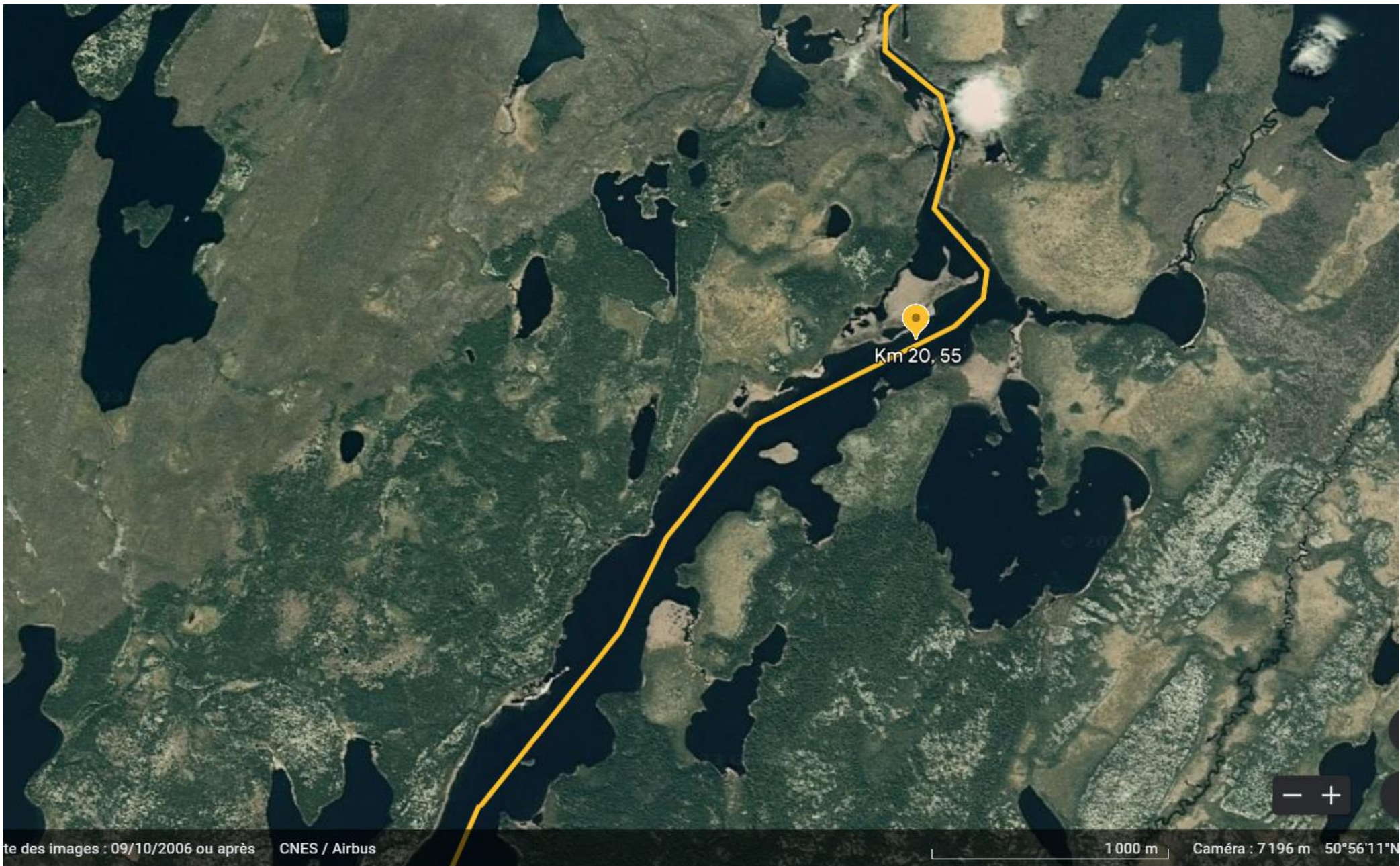
Km 35, 40

1 000 m

Caméra : 7 196 m 50°50'41''

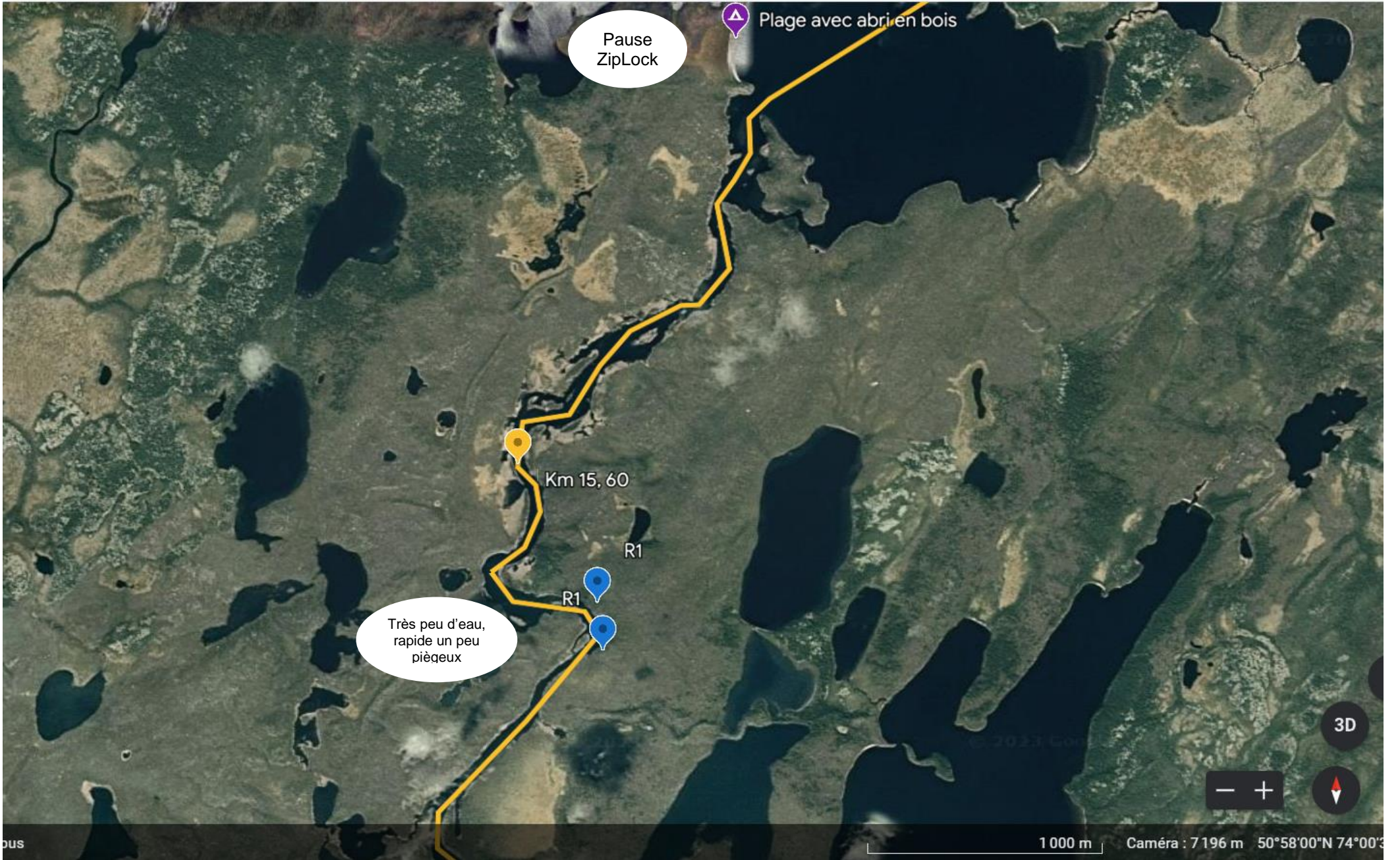






te des images : 09/10/2006 ou après CNES / Airbus

1 000 m Caméra : 7196 m 50°56'11"N



Pause ZipLock

Plage avec abri en bois

Km 15,60

R1

R1

Très peu d'eau,
rapide un peu
piègeux

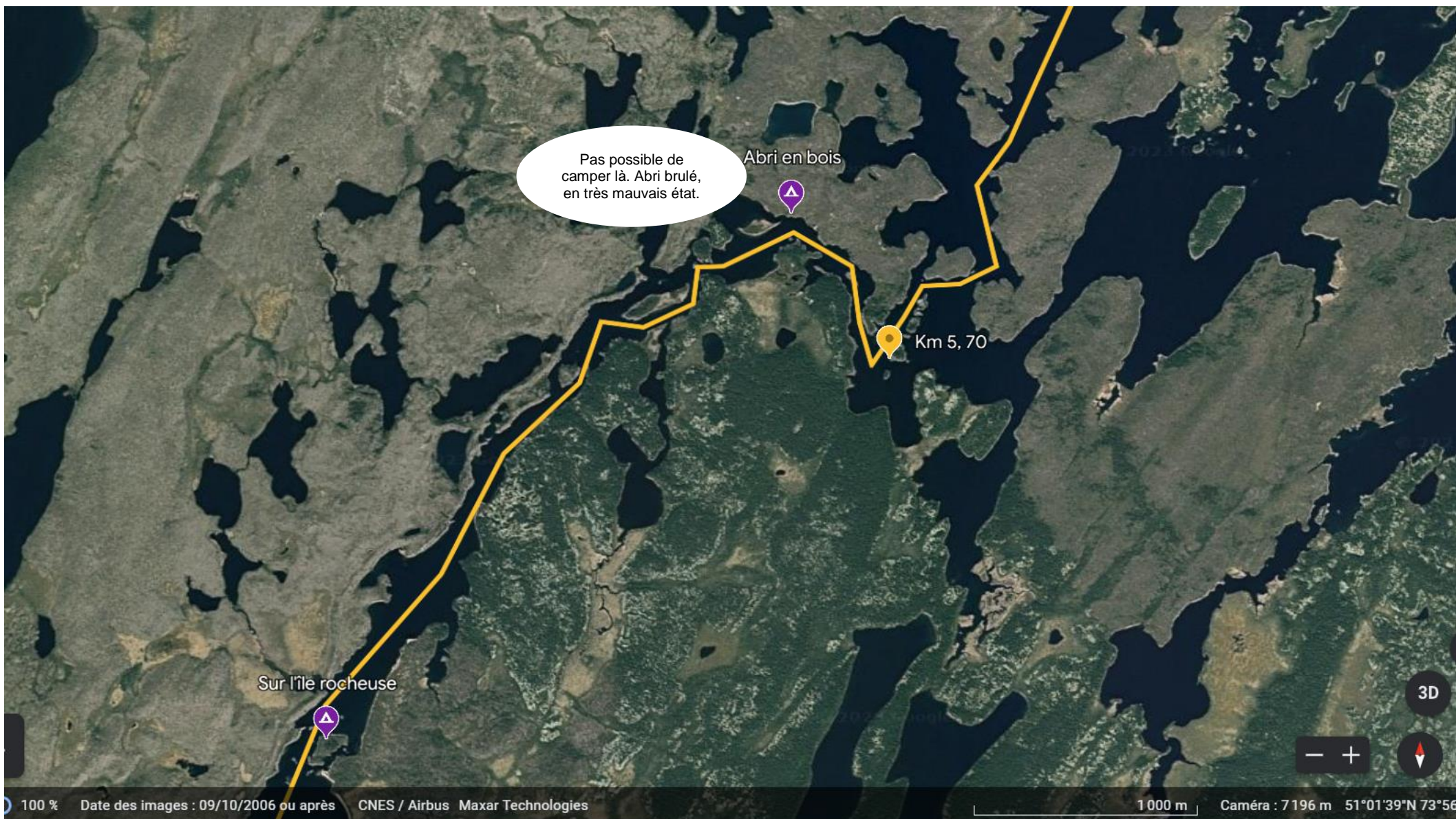
3D

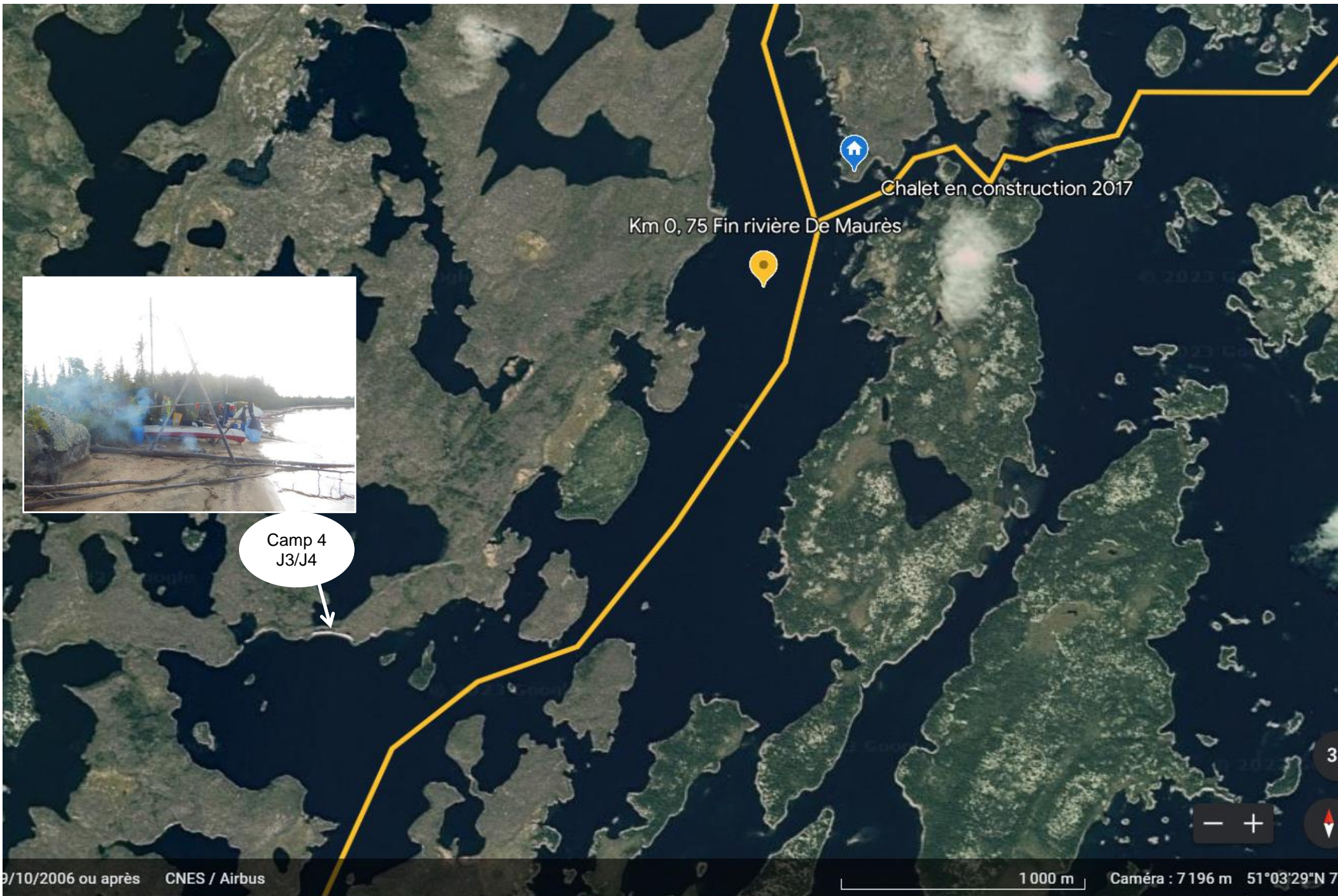
- +



1 000 m

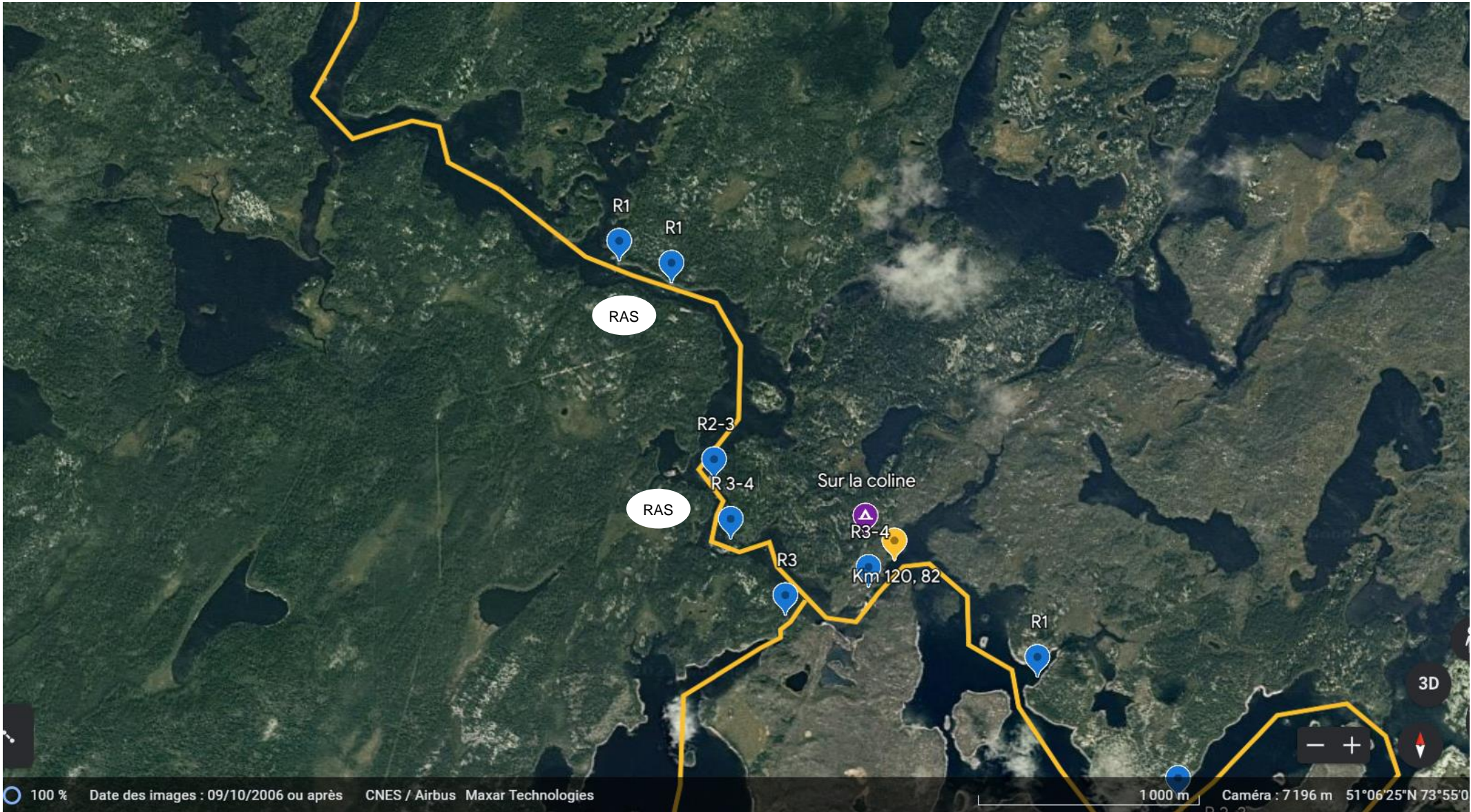
Caméra : 7 196 m 50°58'00"N 74°00'30"W

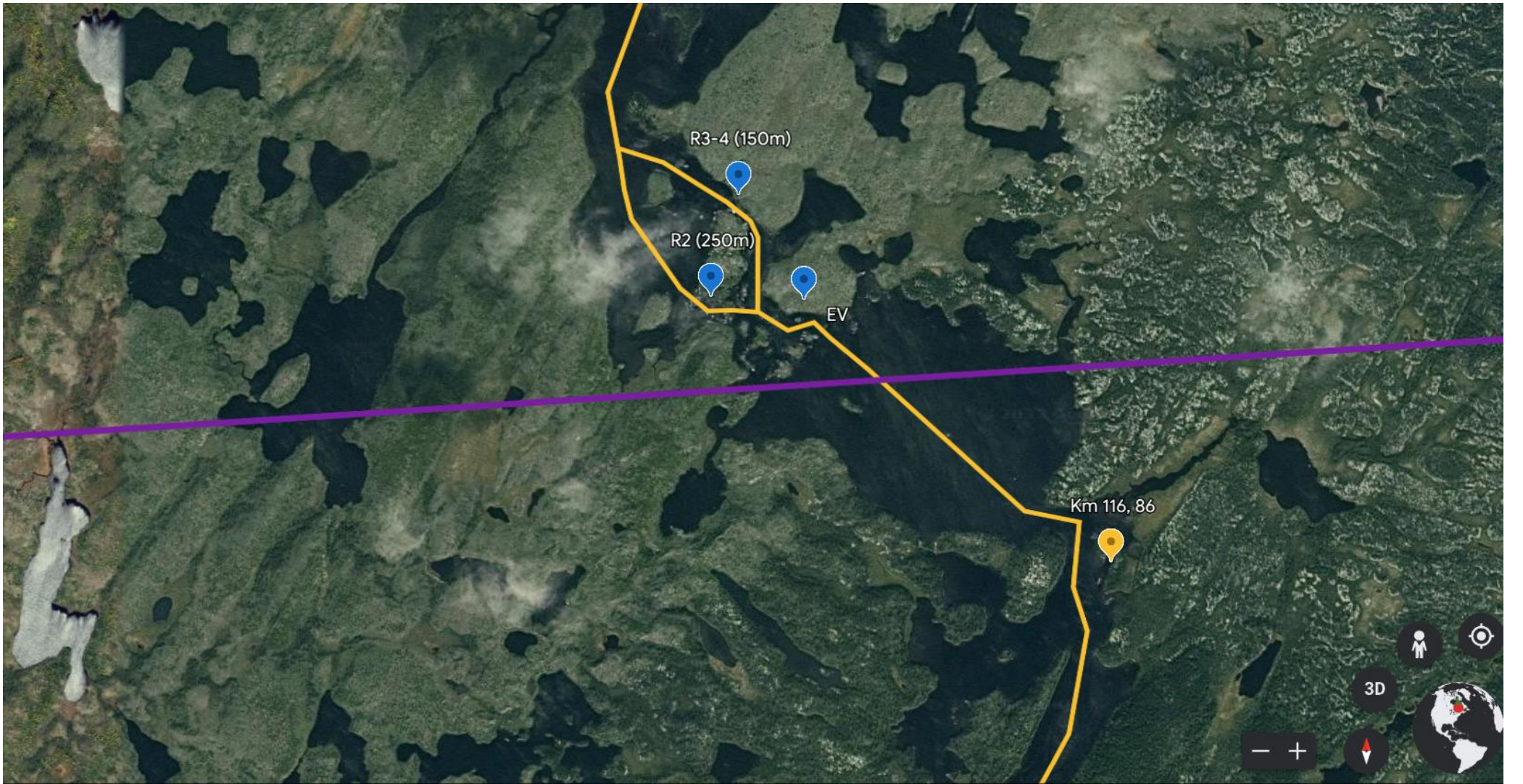


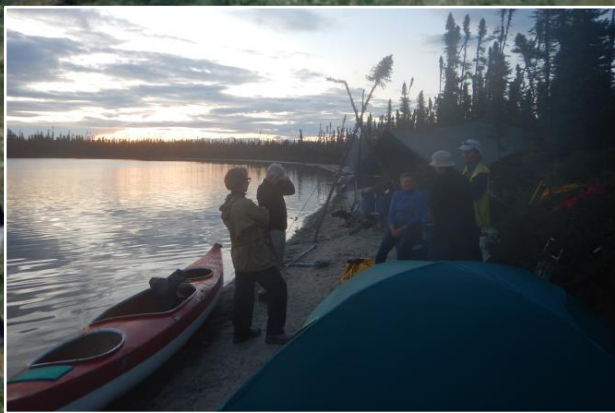
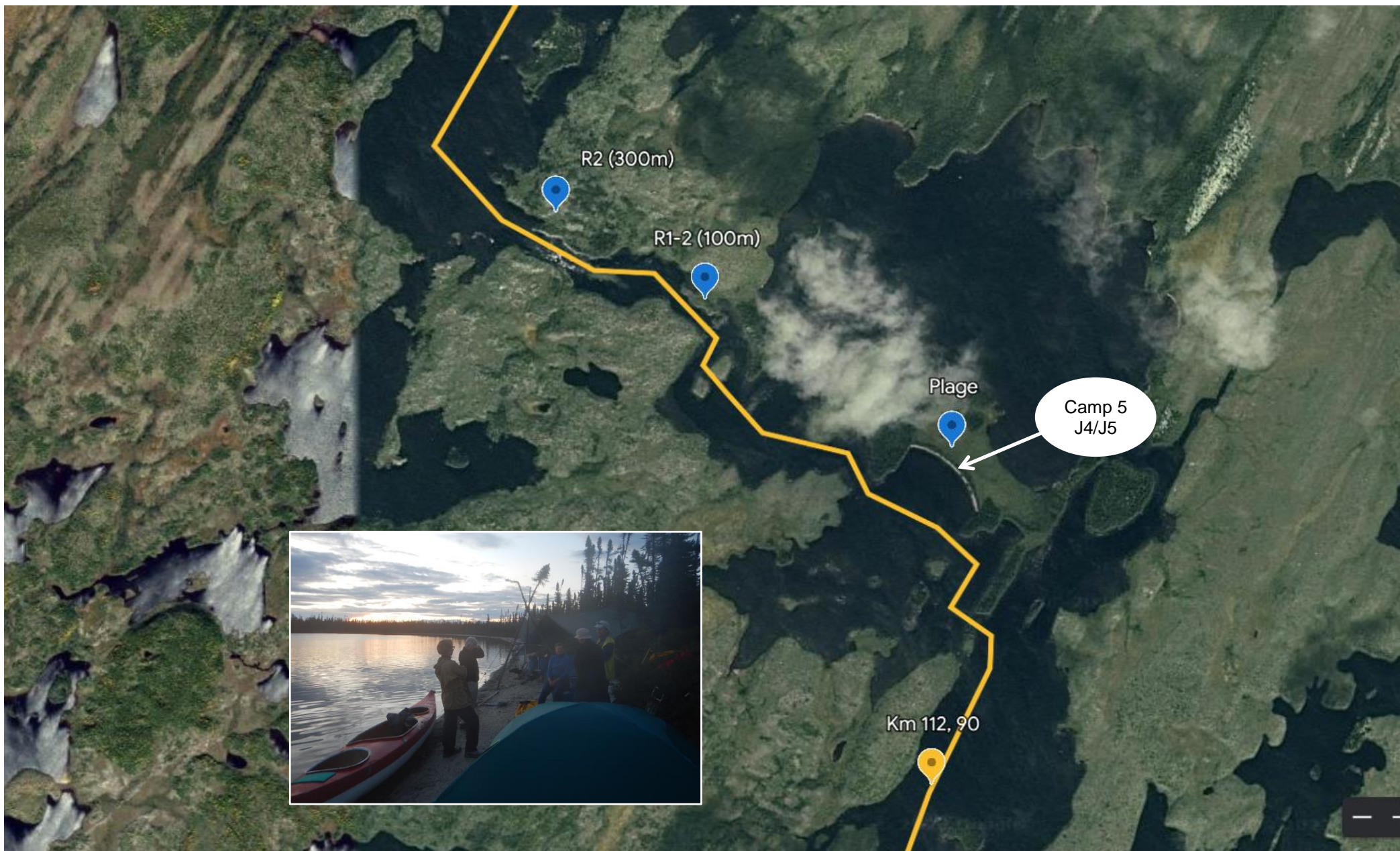


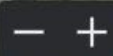
Camp 4
J3/J4

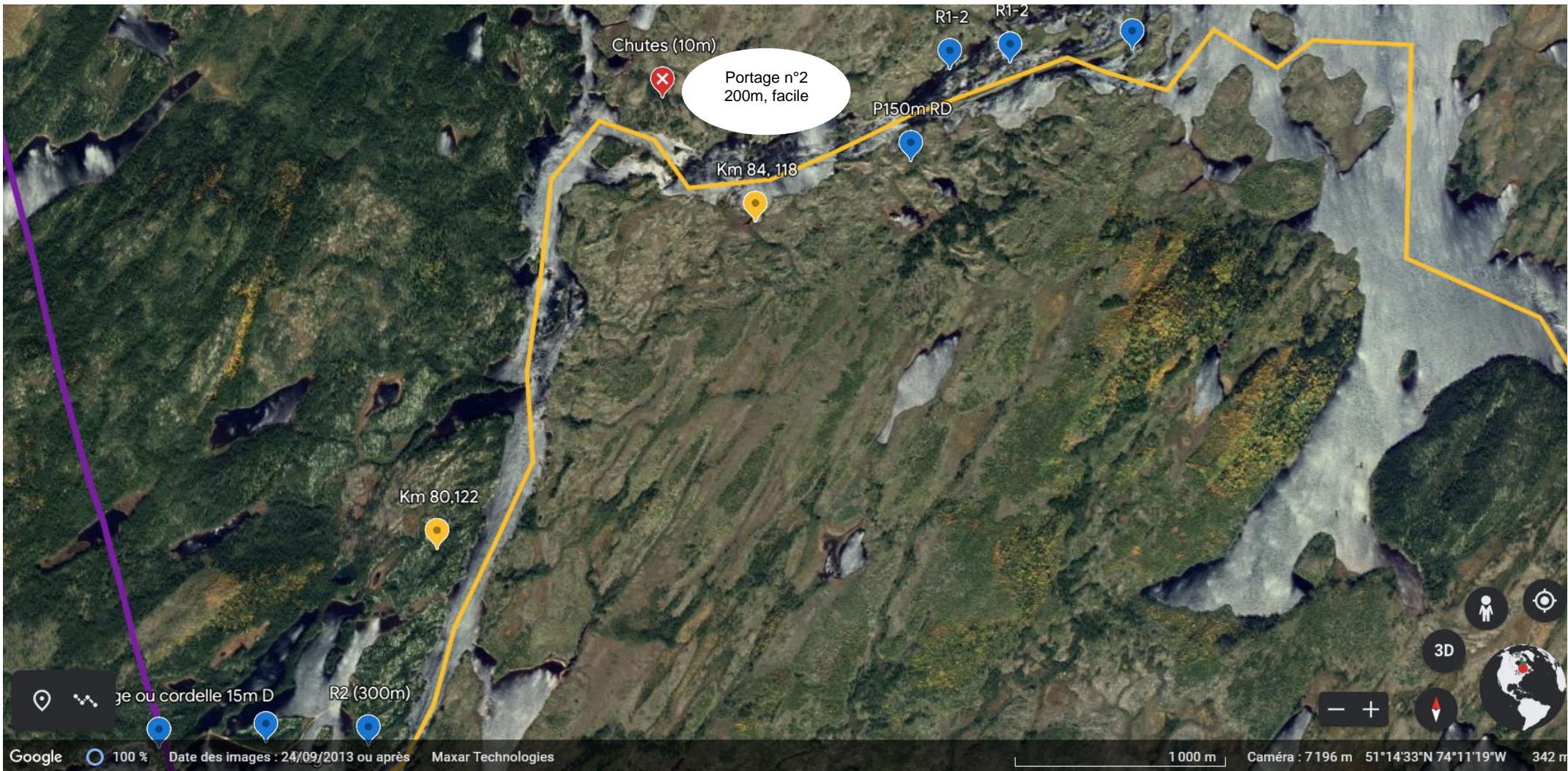


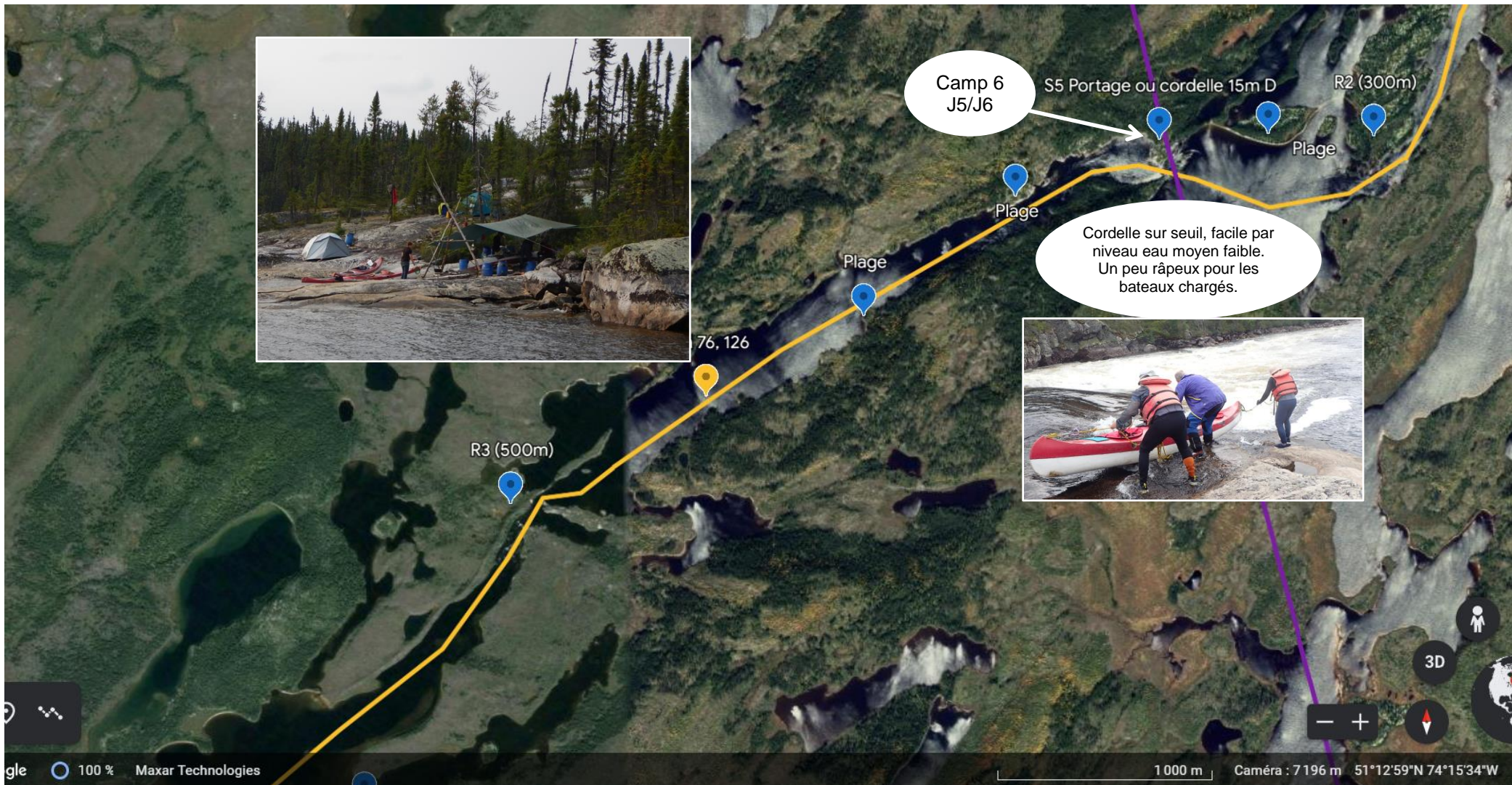


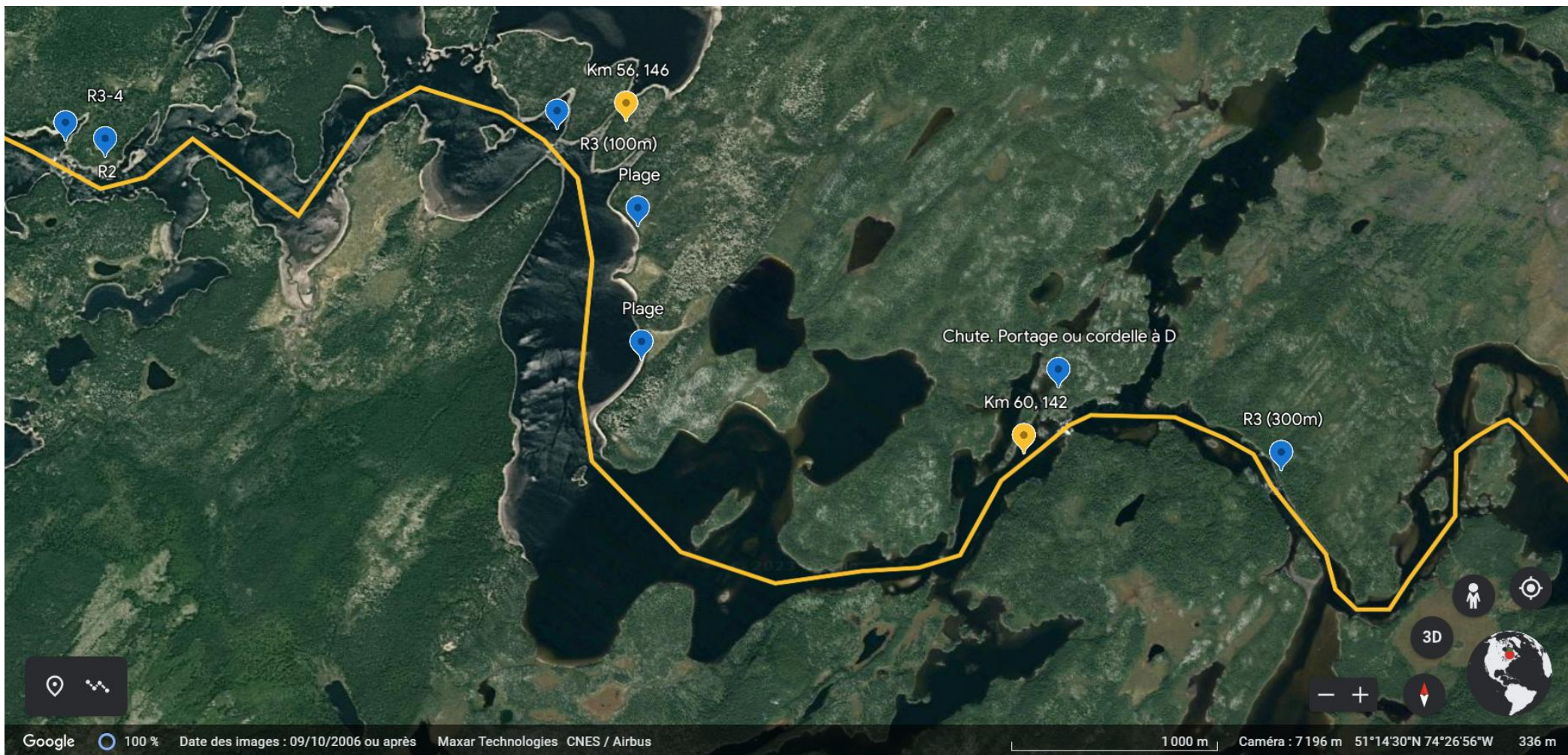


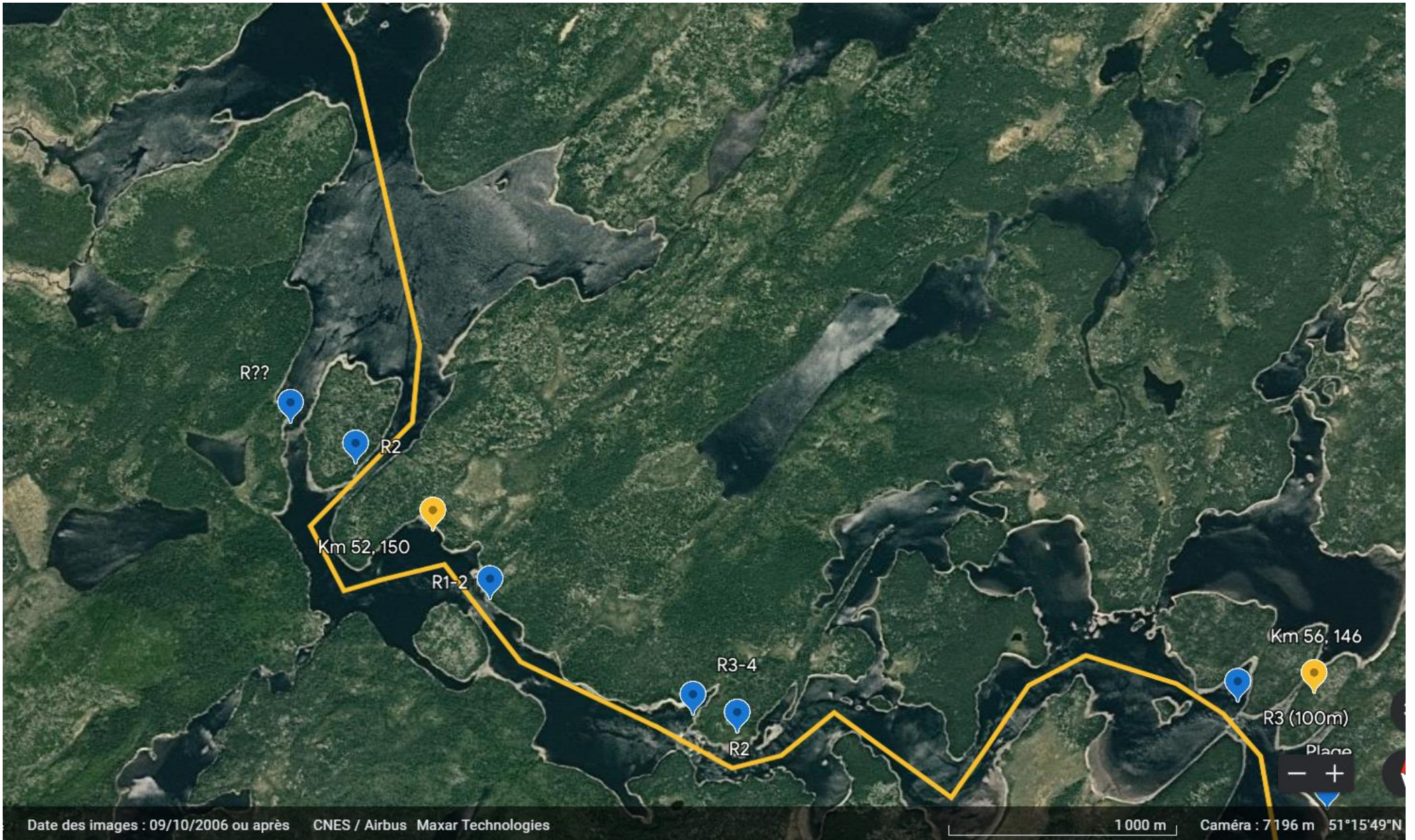






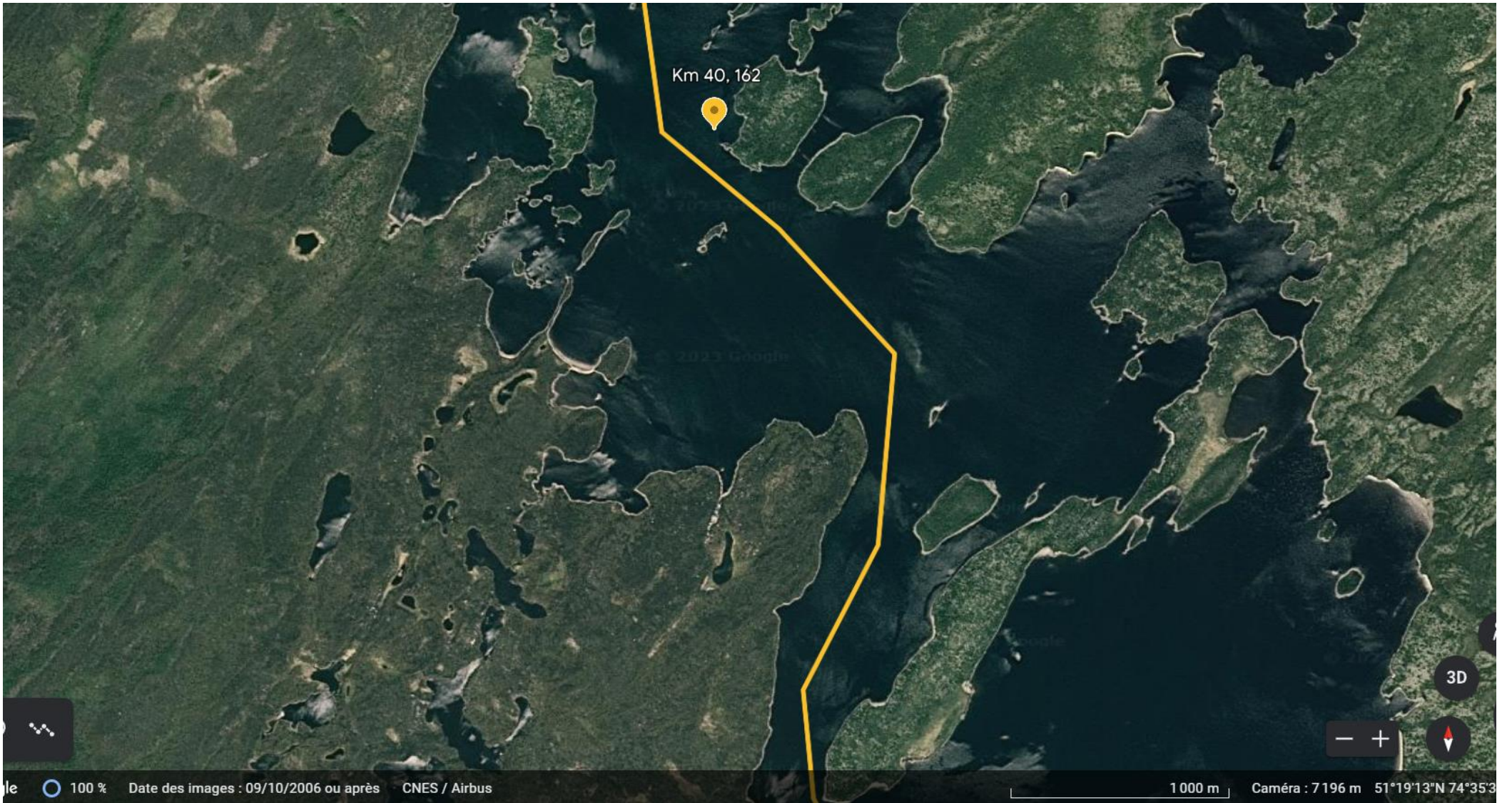








100 % Date des images : 09/10/2006 ou après CNES / Airbus 1 000 m Caméra : 7 196 m 51°17'33"N 74°33'W

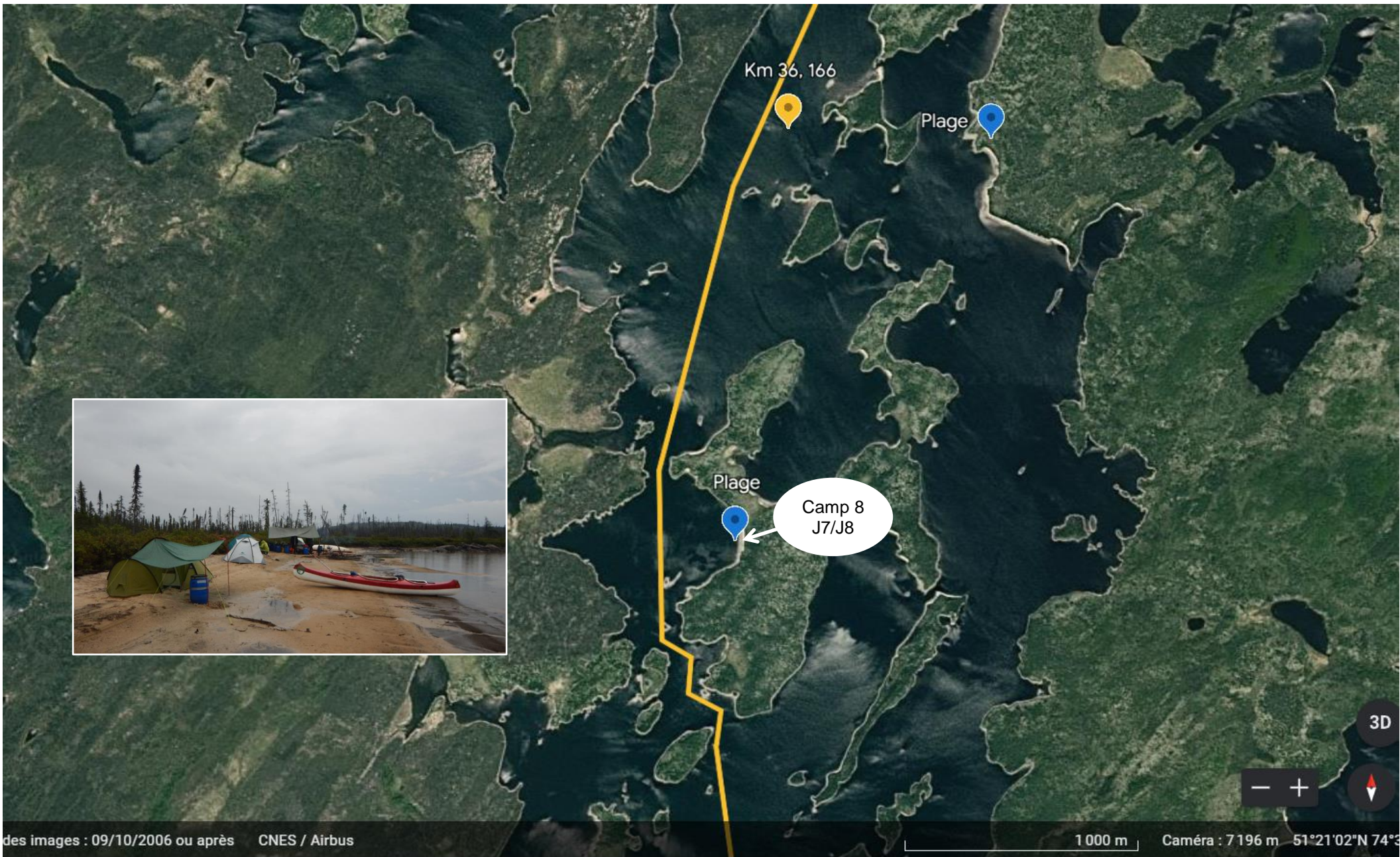


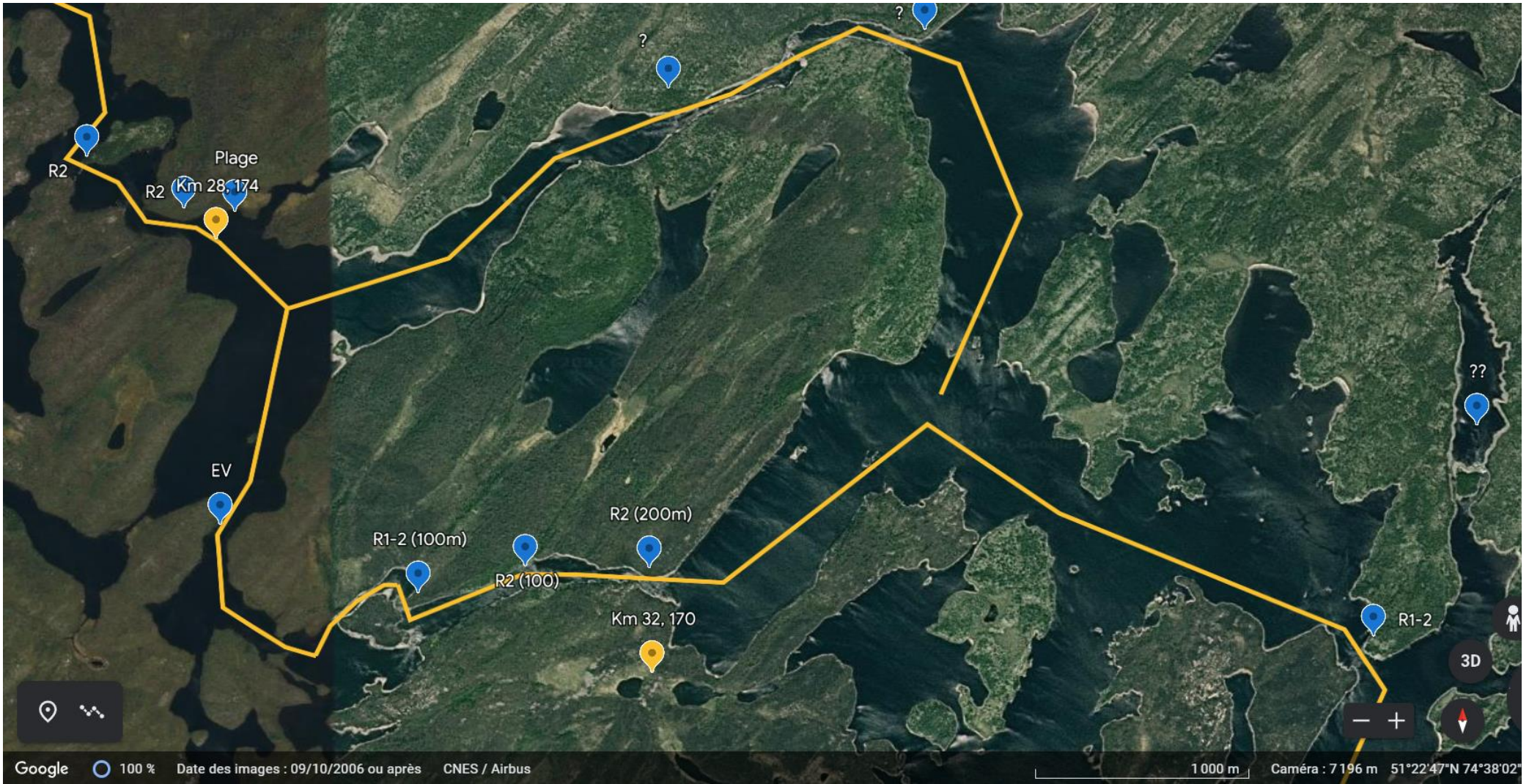
Km 40, 162

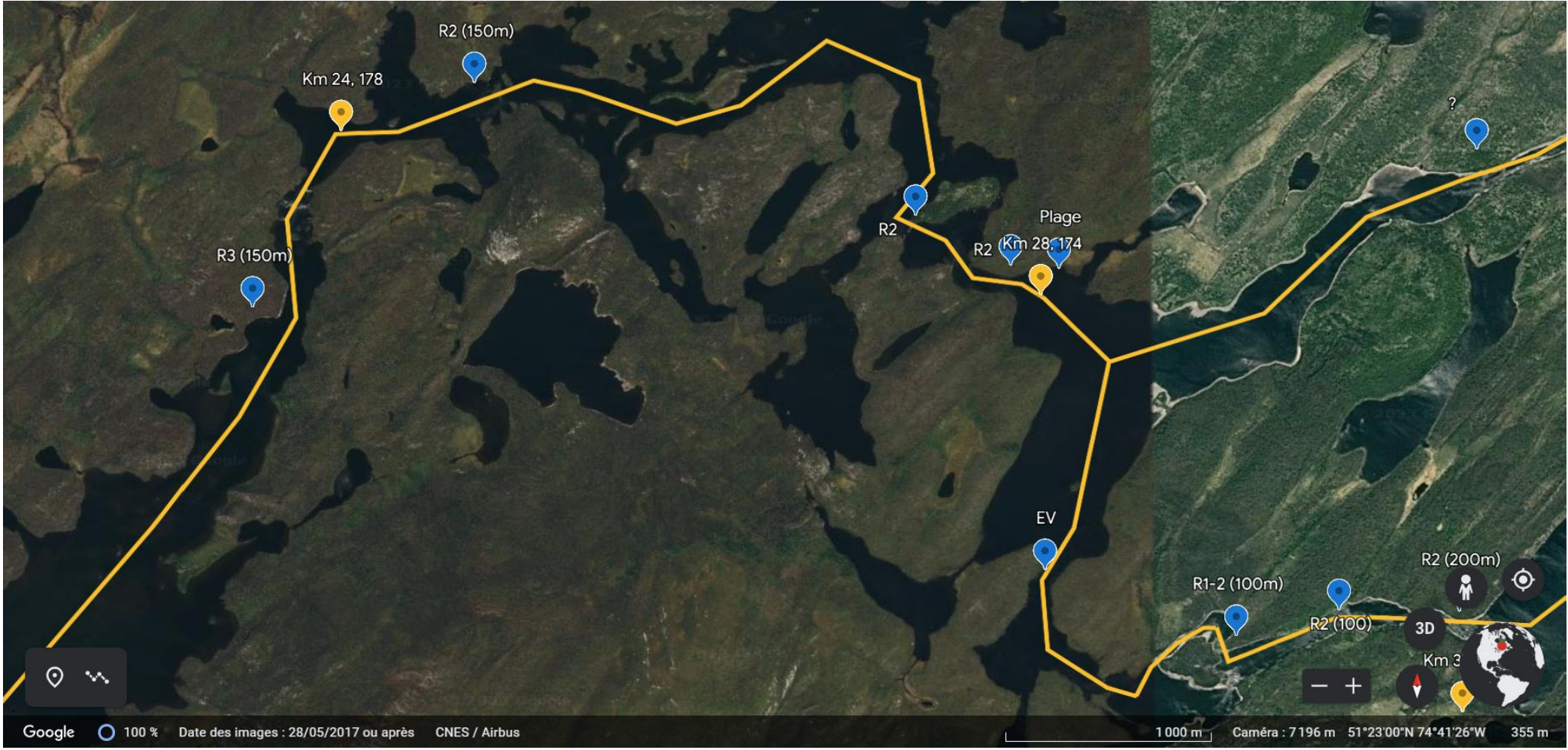
3D

- +





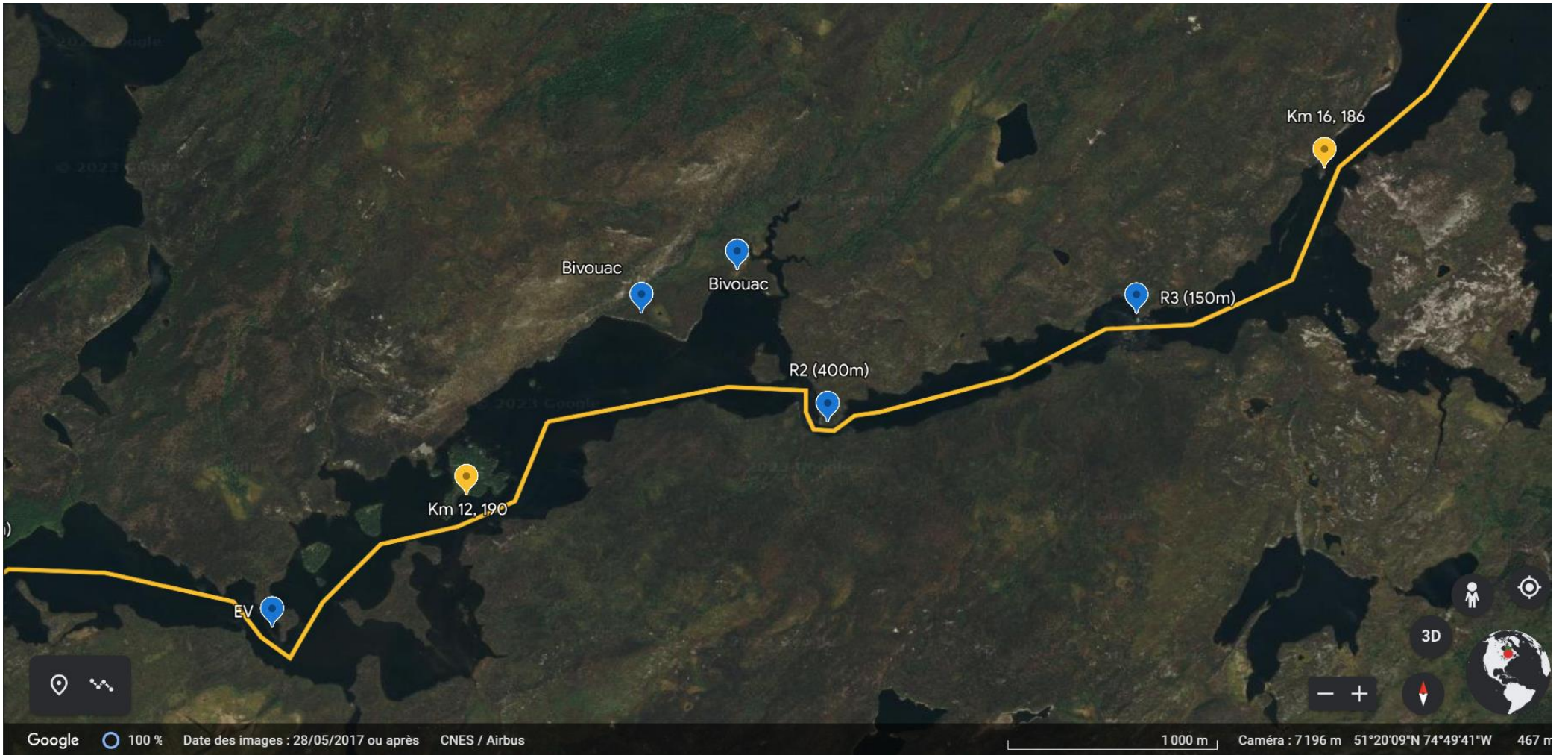






100 % Date des images : 28/05/2017 ou après CNES / Airbus

1 000 m Caméra : 7 196 m 51°21'25"N 74°46'28"W



EV

Km 4, 198

R2 (100m)

Les ours à Mathieu.

Km 8, 194

R2-3

R1-2

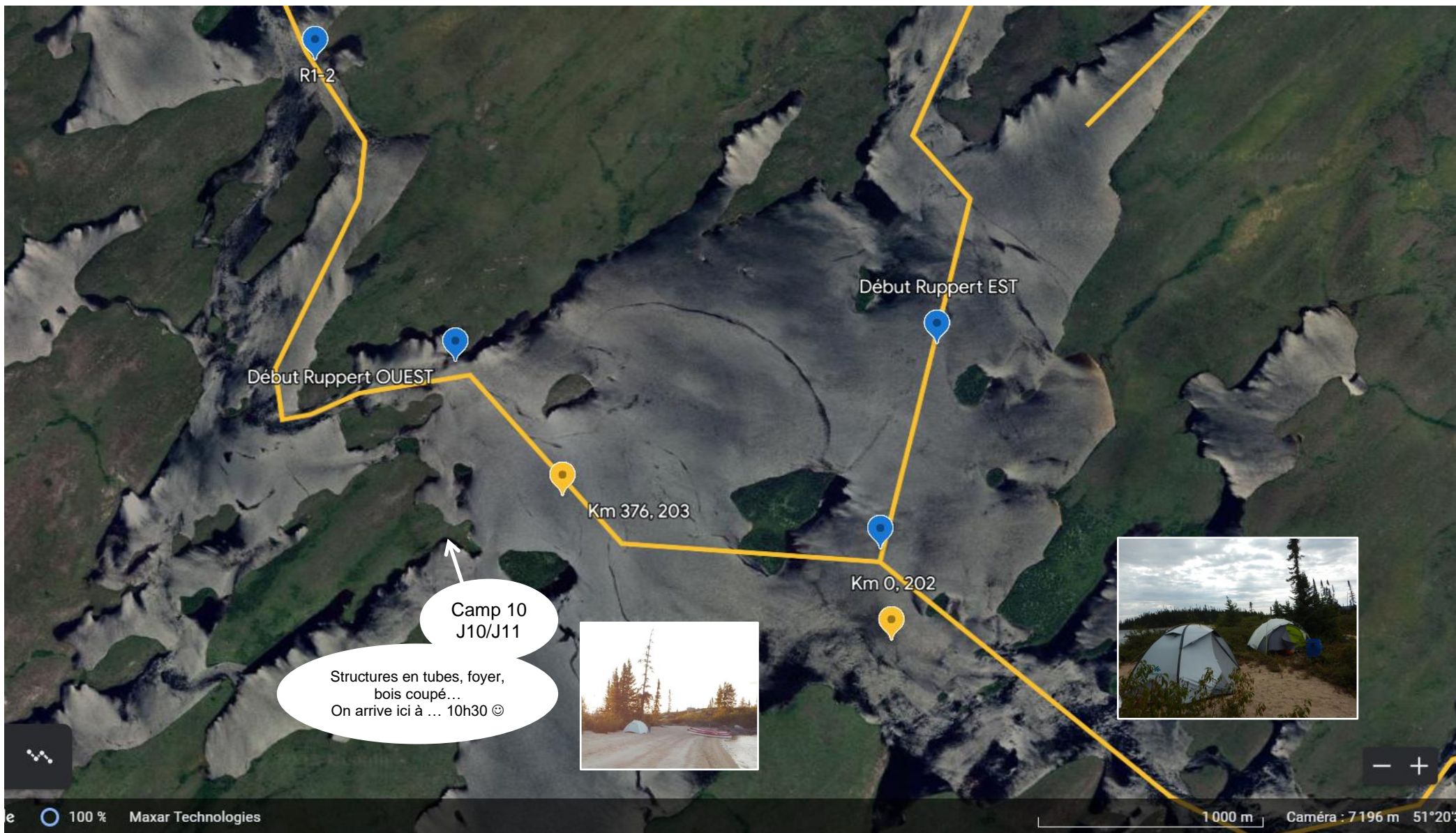
Camp 9
J8/J9/J10
Grande cabane
confortable sur plage
nord.

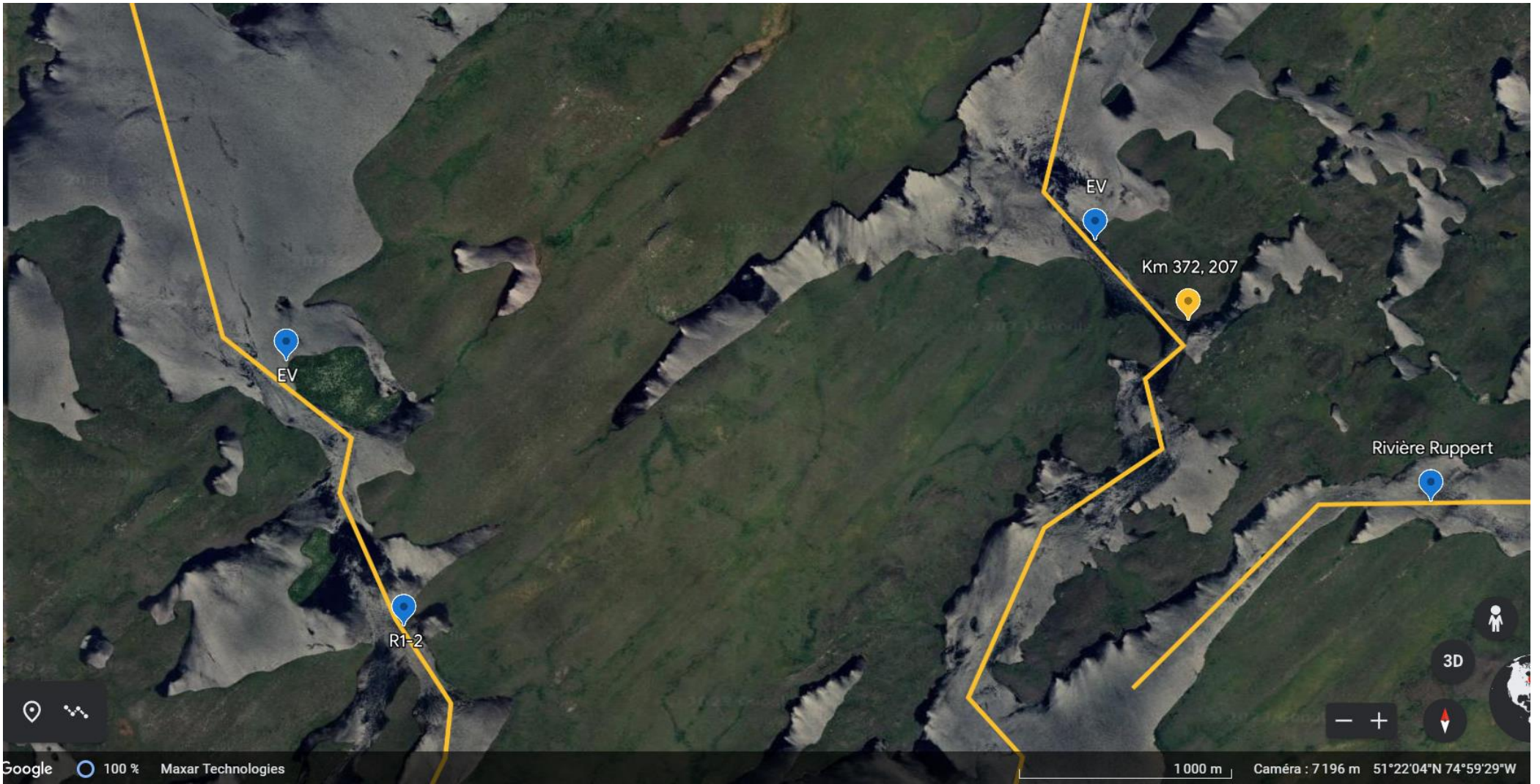
1000 m | Caméra : 7196 m 51°19'18"N 74°54'50"W 311 m

Google 100% Maxar Technologies CNES / Airbus

3D

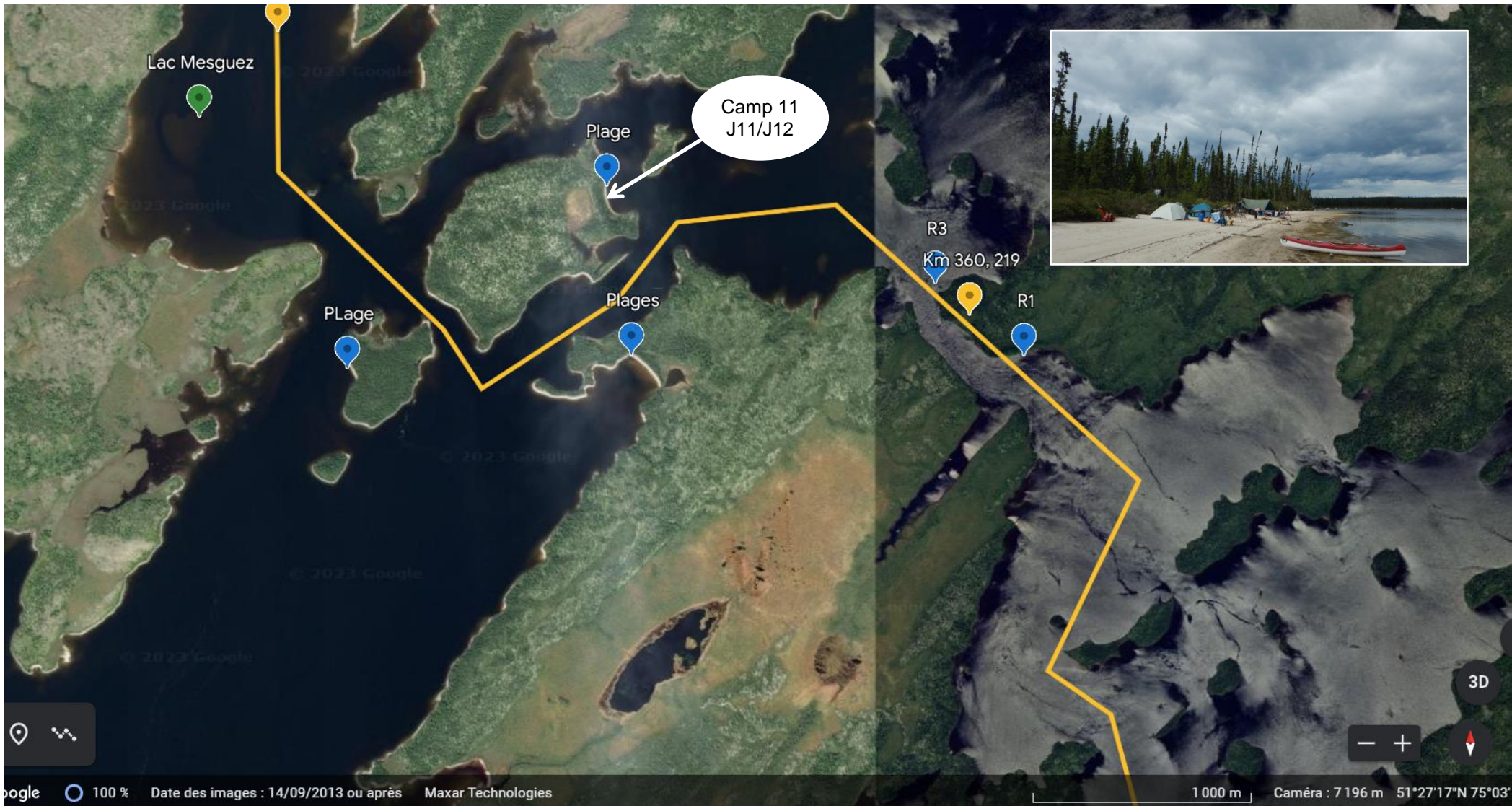
The image is a satellite map from Google Earth showing a yellow route through a rugged, mountainous landscape. Several callouts and markers are present: a blue pin labeled 'EV' in the top left; a yellow pin labeled 'Km 4, 198' on the route; a blue pin labeled 'R2 (100m)' to the right; a blue pin labeled 'R1-2' with a callout bubble containing the text 'Les ours à Mathieu.'; a yellow pin labeled 'Km 8, 194' further along the route; a blue pin labeled 'R2-3' below the yellow pin; and a large callout bubble at the bottom center labeled 'Camp 9 J8/J9/J10 Grande cabane confortable sur plage nord.' with two arrows pointing to a specific location on the route. Two inset photographs are included: one at the top center showing two bears on a rocky shore near water, and another at the bottom left showing a group of people sitting around a table in a tent. The bottom of the map displays technical information: 'Google 100% Maxar Technologies CNES / Airbus' on the left, and '1000 m | Caméra : 7196 m 51°19'18"N 74°54'50"W 311 m' on the right. A '3D' button and a globe icon are also visible in the bottom right corner.

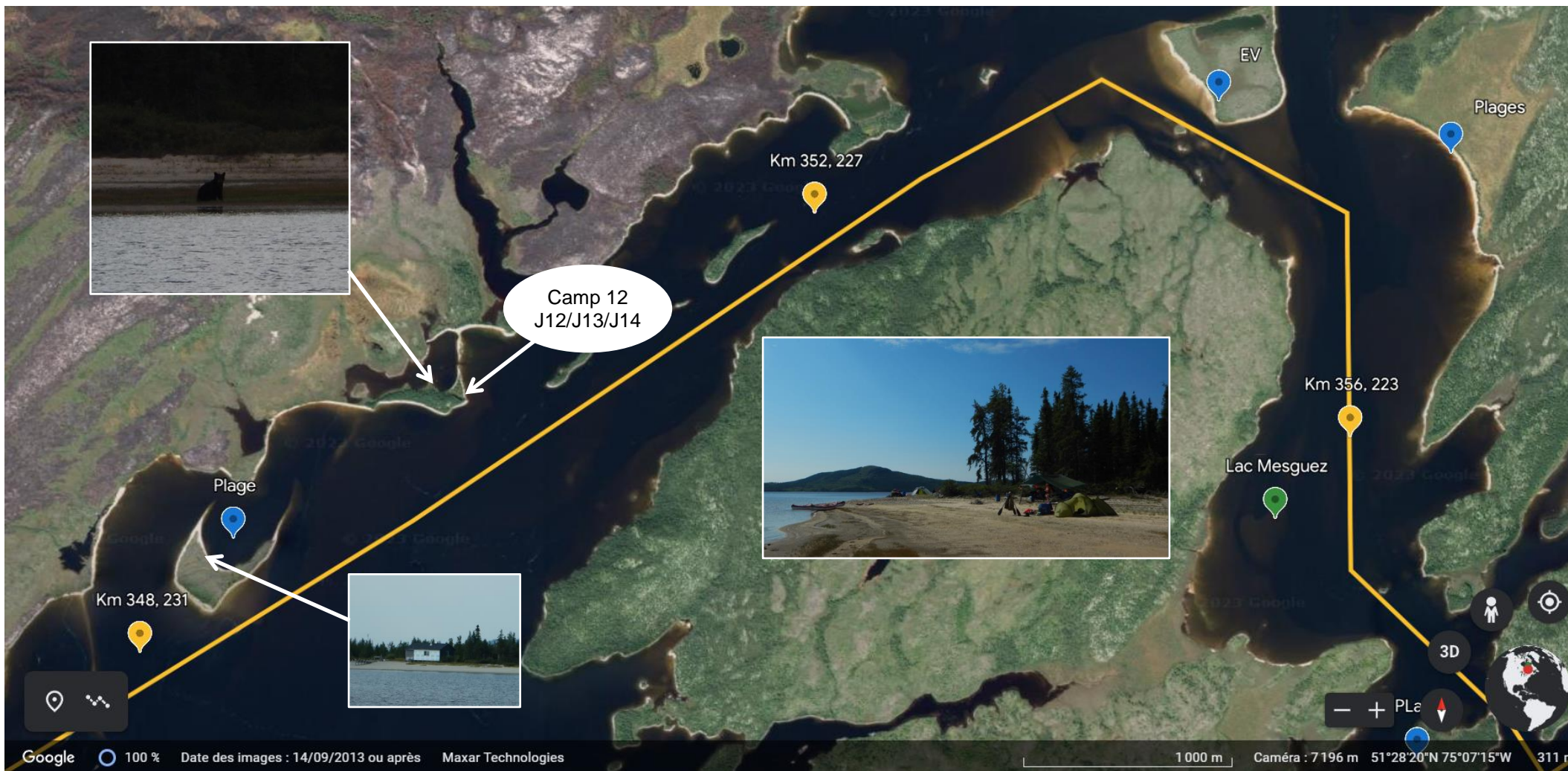














Bivouac

Camp 13
J14/J15

Km , 240

Cet emplacement est bien plus à l'abris, il était occupé ☹

Google 100 % Landsat / Copernicus Maxar Technologies

1000 m Caméra : 7196 m 51°25'44"N 75°18'17"W 335 m

The image is a satellite map from Google Earth showing a river valley. A yellow line traces a path along the river. A blue location pin is labeled 'Bivouac' and a yellow location pin is labeled 'Km , 240'. A white oval callout points to the yellow pin with the text 'Cet emplacement est bien plus à l'abris, il était occupé ☹'. Another white oval callout points to the blue pin with the text 'Camp 13 J14/J15'. Three inset photos are overlaid: the left one shows a person by a tent on a sandy bank; the middle one shows three people sitting under a green tarp; the right one shows a campsite with tents and a log fire pit.

